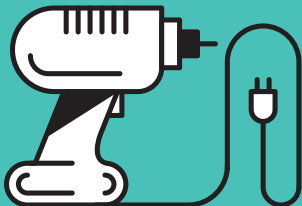
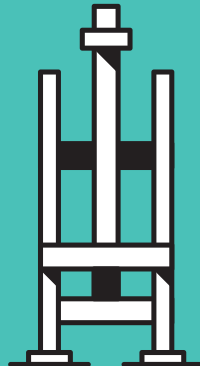
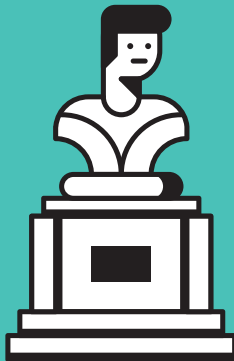
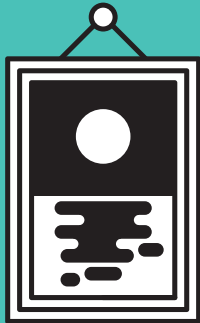
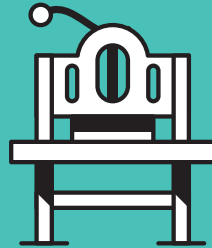
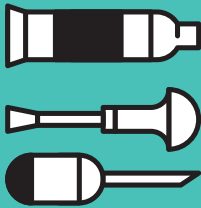
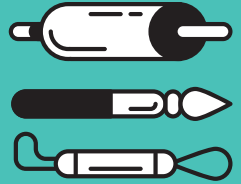
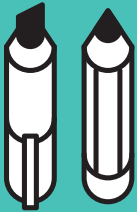


# GUIDE



# GUIDE

**For International Students at  
The Eugeniusz Geppert Academy  
of Art and Design in Wrocław, Poland**

## CONTENTS

# 01

### GENERAL PRESENTATION OF THE ACADEMY

<b>6</b>	The Academy's representatives and contact addresses	<b>25</b>	General presentation
<b>8</b>	Faculties	<b>26</b>	Facilities
<b>18</b>	MFA in Visual Arts	<b>29</b>	The Academy's buildings
<b>20</b>	Doctoral School	<b>30</b>	International Relations and Promotion Department
<b>23</b>	The Academy in numbers	<b>32</b>	During your study time
<b>24</b>	Fields of study	<b>34</b>	Erasmus+ Departmental Coordinators
<b>25</b>	Legal basis of the Academy	<b>35</b>	Grading system

# 02

### FOREIGNERS IN POLAND

<b>36</b>	Poland
<b>38</b>	Foreigners in Poland
<b>41</b>	Polish food
<b>42</b>	Survival still life
<b>44</b>	Bank holidays
<b>44</b>	Polish language or tongue twister
<b>45</b>	Survival vocabulary

# 03

### WROCŁAW

<b>46</b>	General information
<b>49</b>	Lower Silesia
<b>50</b>	Places to see in Wrocław
<b>52</b>	Important phone numbers
<b>54</b>	Public transport in Wrocław



# 01

## GENERAL PRESENTATION OF THE ACADEMY

The Eugeniusz Geppert Academy of Art and Design offers top-of-the-range art and design education on three levels – Bachelor, Master and PhD. We are a state university that educates students on full-time and part-time basis in five faculties: Faculty of Painting and Drawing, Faculty of Sculpture and Art Mediation, Faculty of Graphics and Media Art, Faculty of Interior Architecture, Design and Stage Design and Faculty of Ceramics and Glass.

Our main building is located in the historical part of Wrocław and the second building – the Centre for Applied Arts. Innovation Centre – is the state-of-the-art building with modern studios and facilities.

**JOIN  
US** ▶



[asp.wroc.pl/en](http://asp.wroc.pl/en)



[asp.wroc.pl/candidate](http://asp.wroc.pl/candidate)



[instagram.com/asp\\_wroclaw/](https://www.instagram.com/asp_wroclaw/)



[facebook.com/aspwroc](https://www.facebook.com/aspwroc)



[youtube.com/ASP Wroclaw](https://www.youtube.com/ASP Wroclaw)

## The Academy's representatives and contact addresses



### The Eugeniusz Geppert Academy of Art and Design in Wrocław

Plac Polski 3/4, 50-156 Wrocław  
phone: +48 71 343 80 31  
asp.wroc.pl  
facebook.com/aspwroc  
instagram.com/asp\_wroclaw/

### Centre for Applied Arts.

#### Innovation Centre

ul. Traugutta 19/21  
50-416 Wrocław  
phone: +48 71 343 84 51

### Rector

Prof. Wojciech Pukocz  
phone: +48 71 334 80 31, ext. 222  
rector@asp.wroc.pl

### Vice-Rector for Scientific Affairs and Cooperation with External Bodies

ac. prof. Marta Płonka  
phone: +48 71 334 80 31, ext. 213  
prornauk@asp.wroc.pl

### Vice-Rector for Education and Student Affairs

ass. prof. Anita Wincencjusz-Patyna, PhD  
phone: +48 71 334 80 31, ext. 213  
prordyd@asp.wroc.pl

### Vice-Rector for Foreign Cooperation and Promotion

Prof. Kazimierz Pawlak  
phone: +48 71 334 80 31, ext. 323  
prorprom@asp.wroc.pl

### Dean of the Doctoral School

ac. prof. Jakub Jernajczyk  
phone: +48 71 343 80 31, ext. 315  
j.jernajczyk@asp.wroc.pl

## THE INTERNATIONAL RELATIONS AND PROMOTION DEPARTMENT

Plac Polski 3/4  
50-156 Wrocław, Poland  
rooms no. 215 b, 216, 217

### Head of Department

Aleksandra Zaczek, MA  
phone: +48 71 334 80 31, ext. 239  
promocja@asp.wroc.pl  
room no. 216

### Erasmus+ Institutional Coordinator

Anna Kida, MA  
phone: +48 71 334 80 31, ext. 232  
erasmus@asp.wroc.pl  
room no. 217

### Specialist in Internationalisation of Education

Edyta Linek, MA  
phone: +48 71 334 80 31, ext. 311  
studyinenglish@asp.wroc.pl  
room no. 217

### International Cooperation Officer

Paweł Czajka  
phone: +48 71 334 80 31, ext. 232  
international@asp.wroc.pl  
room no. 217

### Graphic Designer

Aleksandra Niemiec-Dudek, MFA  
phone: +48 71 334 80 31, ext. 239  
a.niemiec@asp.wroc.pl  
room no. 215 b

### Website Editor

Iwona Matkowska, MFA  
phone: +48 71 334 80 31, ext. 239  
www@asp.wroc.pl  
room no. 215 b

### Photographer

Michał Pietrzak, PhD  
m.pietrzak@asp.wroc.pl

## DOCTORAL SCHOOL – DEAN'S OFFICE

Marta Włodarczyk, MA  
m.wlodarczyk@asp.wroc.pl  
phone: +48 71 343 80 31, ext. 315  
room no. 102 a



PL  
Wydział Ceramiki  
i Szkła

## FACULTY OF CERAMICS AND GLASS



Dean's office  
secretary

Plac Polski 3/4  
room no. 105 M  
phone: +48 71 334 47 16  
dziekanatcisz@asp.wroc.pl

Description  
of the faculty

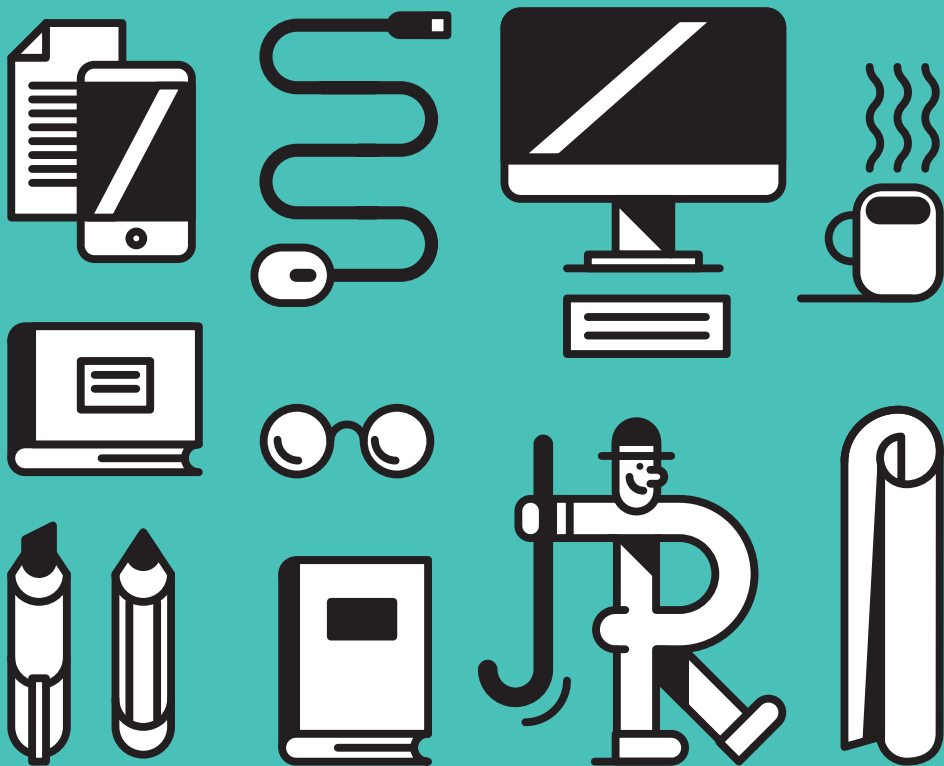
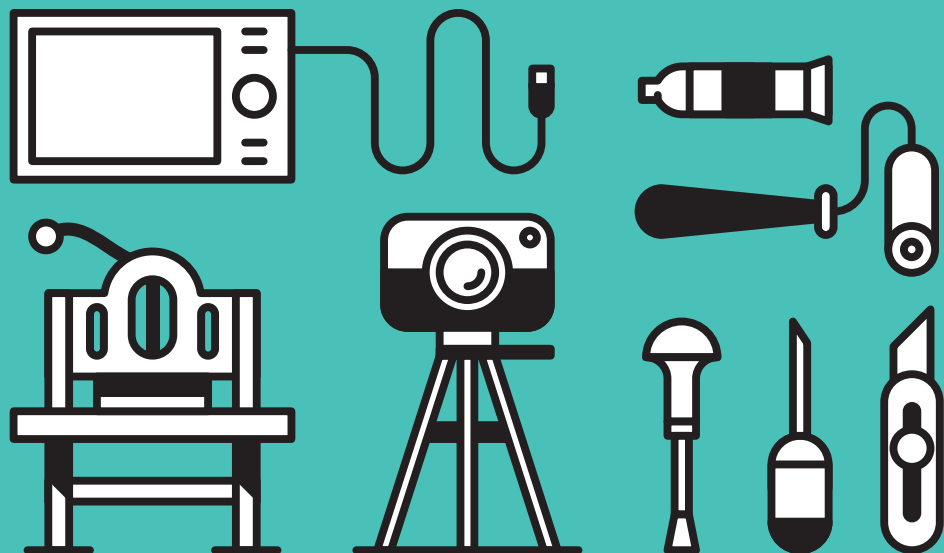
The Faculty of Ceramics and Glass consists of three departments and educates students in design and creation as well as conservation and restoration of glass and ceramics. Based on enduring pre-war traditions brought to Wrocław by professors from the Academies in Warsaw and Cracow, and from ceramic plants and glassworks located in Lower Silesia, the faculty prepares students for independent activities as designers. By familiarising students with materials and diversified techniques these departments create possibilities for personal artistic expression.

Programmes

Art and Design of Ceramics	Sztuka i wzornictwo ceramiki
Art and Design of Glass	Sztuka i wzornictwo szkła
Conservation and	Konserwacja i restauracja
Restoration of Artworks:	dzieł sztuki w zakresie
Conservation and Restoration	konserwacji i restauracji
of Ceramics and Glass	ceramiki i szkła

Authorities

Dean: ac. prof. Beata Mak-Sobota  
Vice-dean: ac. prof. Adam Abel



PL

Wydział Grafiki  
i Sztuki Mediów

Dean's office  
secretary

Description  
of the faculty

Programmes

Authorities

## FACULTY OF GRAPHICS AND MEDIA ART



Plac Polski 3/4  
room no. 119 M  
phone: +48 71 334 47 27  
ama@asp.wroc.pl

The Faculty of Graphics and Media Art engages students in a variety of printmaking processes and methods of communication, so it enables students to become fluent in all forms of the graphic language. The traditional and modern methods of printmaking and digital printing are taught – the faculty adheres to the well-established methods of the Polish tradition while encouraging experimental approaches. The Department of Media Art offers a chance to learn the practicalities and the theory of media art as well as the connection between art and science in new media.

Graphics	_____	Grafika
Graphic Design	_____	Projektowanie graficzne
Media Art	_____	Sztuka mediów
Photography	_____	Fotografia
and Multimedia	_____	i multimedia

Dean: ac. prof. Marek Grzyb

Vice-dean: Prof. Anna Trojanowska



PL

Wydział Architektury  
Wnętrz, Wzornictwa  
i Scenografii

## FACULTY OF INTERIOR ARCHITECTURE, DESIGN AND STAGE DESIGN



### Dean's office secretary

Plac Polski 3/4  
room no. 104 M  
phone: +48 71 334 47 14  
dziekanatawiw@asp.wroc.pl

### Description of the faculty

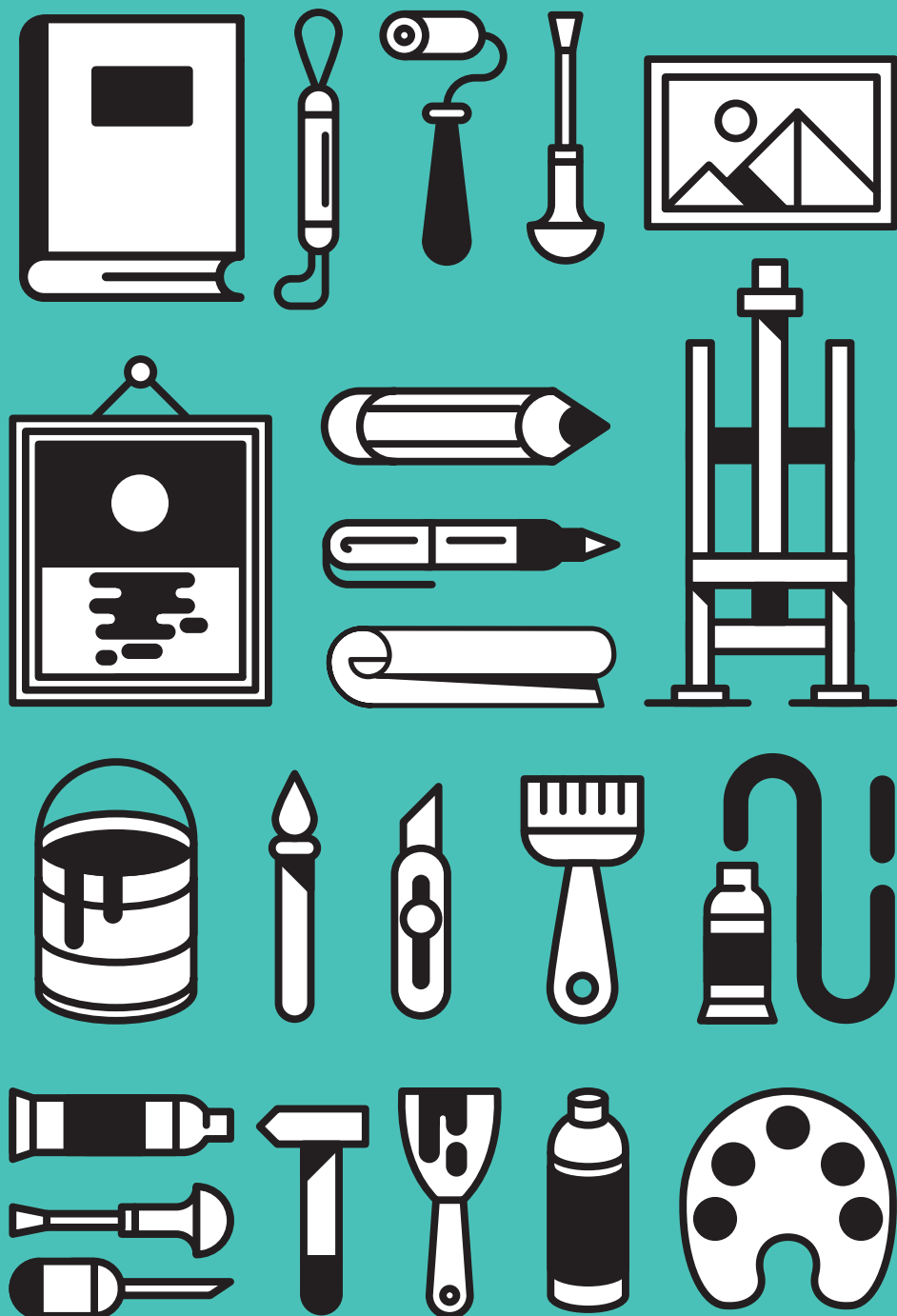
The Faculty of Interior Architecture, Design and Stage Design offers studies in Interior Architecture and Design as well as Stage Design. The study programme enables students to work within a range of interior architecture techniques. They are also taught to respond to the needs of the design industry while being equipped with a wide range of skills and knowledge covering areas from humanistic studies to general knowledge studies. The faculty strongly encourages lifelong learning and awareness of human sciences, while pursuing the quest of making art.

### Programmes

Interior	Architektura
Architecture	wnętrz
Design	Wzornictwo
Stage Design	Scenografia

### Authorities

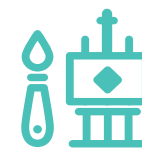
Dean: ass. prof. Piotr Kuczkowski, PhD  
Vice-dean: ass. prof. Patryk Knapczyk, PhD



PL

Wydział Malarstwa  
i Rysunku

## FACULTY OF PAINTING AND DRAWING



Dean's office  
secretary

Plac Polski 3/4  
room no. 116 M  
phone: +48 71 334 47 21  
dziekanatmirz@asp.wroc.pl

Description  
of the faculty

The Faculty of Painting and Drawing educates students in painting and drawing. Studies covering the group of majors, supported by knowledge acquired in the Institute of History of Art and Philosophy, the Institute of Foreign Languages and numerous optional studios ensure the comprehensive preparation of a young prospective artist for future creative and professional activity.

Programmes

Painting	_____	Malarstwo
Drawing	_____	Rysunek

Authorities

Dean: ac. prof. Marta Borgosz  
Vice-dean: assoc. prof. Sonia Ruciak, PhD



PL

Wydział Rzeźby  
i Mediacji Sztuki

## FACULTY OF SCULPTURE AND ART MEDIATION



Dean's office  
secretary

Plac Polski 3/4  
room no. 102 b  
phone: +48 71 343 80 31, ext. 271  
dziekanatrzym@asp.wroc.pl

Description  
of the faculty

The Faculty of Sculpture and Art Mediation offers teaching in three fields of study: Sculpture, Art Mediation and Art Management. While studying Sculpture, students explore how to shape a block in relation to its surroundings, they learn about digital technologies (3D) and design issues. Students have excellent technical facilities at their disposal, as we have the best sculpting technique studios in Poland. Art Mediation combines practice and art theory. Its aim is to engage in the discourse between art and audience, an artist and audience, a critic/curator and market requirements. The Art Management degree prepares students to create artistic spaces, handle marketing, branding, fundraising, and event design, and navigate the art market.

Programmes

Sculpture	Rzeźba
Art Mediation	Mediacja sztuki
Art Management	Zarządzanie w sztuce

Authorities

Dean: ac. prof. Grzegorz Niemyjski  
Vice-dean: assoc. prof. Monika Aleksandrowicz, PhD

## MFA IN VISUAL ARTS

### MFA's office

Plac Polski 3/4

room no. 217

phone: +48 71 334 80 31, ext. 311

studyinenglish@asp.wroc.pl

More information:



MFA in Visual Arts is a two-year (four-semester), full-time interdisciplinary Master's programme conducted entirely in English. Designed for graduates of first-cycle or equivalent art and design studies, the programme is delivered by all faculties of the Academy and allows students to shape an individual educational path aligned with their artistic goals. The curriculum combines compulsory theoretical courses with studio-based practice. Core subjects include: Selected Issues of Contemporary Art; Aesthetics / Theory of Art; Analysis and Interpretation of an Artwork; Drawing; Thesis Advising

These mandatory courses provide a solid conceptual and critical framework for developing independent artistic work. The Major-Oriented Curriculum focuses on specialisation and studio work. Students select classes and diploma-awarding studios from a wide offer across all five faculties. Each year, the list of available studios and courses is updated, offering flexibility and the opportunity to work under the guidance of experienced artists and educators.

Students have the option to take additional courses in the Polish language and culture.

The MFA programme supports the development of creative autonomy, critical thinking, and advanced skills in visual arts within a dynamic, international academic environment.





## DOCTORAL SCHOOL

### Dean's office

Plac Polski 3/4  
room no. 102 a  
+48 71 343 80 31, ext. 315  
m.wlodarczyk@asp.wroc.pl

More information:



The Doctoral School of the Eugeniusz Geppert Academy of Art and Design in Wrocław is an artistic and research unit, educating specialists demonstrating significant artistic achievements as well as high research and teaching potential. The doctoral training, which lasts 6 semesters, prepares the researchers to obtain a doctoral degree in the field of art in the discipline of fine arts and conservation of works of art.

Characteristics of our Doctoral School:

- The curriculum of the Doctoral School maintains balance between practice and theory, respect for tradition and openness to new trends, attachment to classical techniques and experimentation with new technologies.
- The Doctoral School at the Eugeniusz Geppert Academy of Art and Design in Wrocław is the only unit of its kind among Polish art academies that provides education entirely in English. As of the 2022/2023 academic year, a parallel mode of education in Polish has also been launched.
- PhD students from all over the world study at the Doctoral School, including countries such as Austria, Brazil, China, Greece, Iran, Mexico, Romania, Slovakia, Sweden, Turkey and the United Kingdom.

- Our PhD students actively participate in the life of the international artistic and scientific community, taking an active part in exhibitions, competitions, residencies, symposia and conferences, carrying out research and implementation projects and publishing texts in specialist journals and scientific monographs.
- In accordance with the Law on Higher Education and Science (of 20 July 2018), all PhD students at Polish doctoral schools receive high monthly scholarships (which are further increased after passing the mid-term evaluation). In addition, in the case of the Doctoral School at our Academy, some foreign doctoral students receive increased scholarships within the STER programme, funded by the National Agency for Academic Exchange.

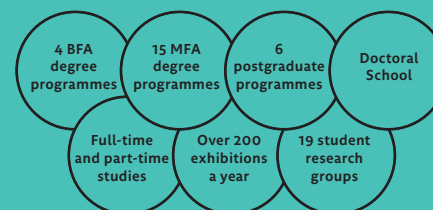
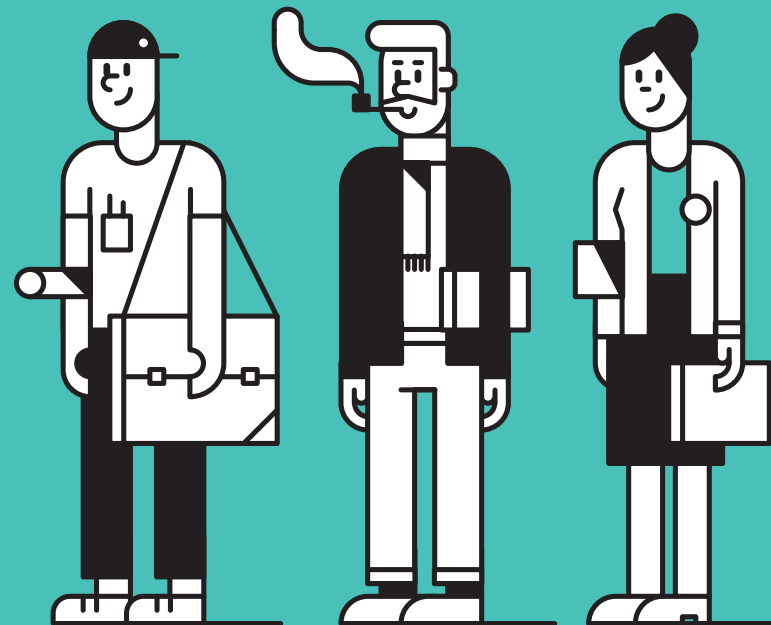


## THE ACADEMY IN NUMBERS

around  
**1200**  
students

around  
**250**  
teaching  
staff

around  
**130**  
administration  
staff



## Fields of study

<b>BACHELOR (3 YEARS)</b>	<ul style="list-style-type: none"> <li>• Art Management</li> <li>• Art Mediation</li> <li>• Art and Design of Ceramics</li> <li>• Art and Design of Glass</li> </ul>
<b>MASTER (2 YEARS)</b>	<ul style="list-style-type: none"> <li>• Art Mediation</li> <li>• Art and Design of Ceramics</li> <li>• Art and Design of Glass</li> <li>• Interior Architecture</li> <li>• Media Art</li> <li>• MFA in VISUAL ARTS (interdisciplinary study programme conducted in English)</li> </ul>
<b>COMBINED BACHELOR/ MASTER 4,5–6 YEARS)</b>	<ul style="list-style-type: none"> <li>• Conservation and Restoration of Ceramics and Glass (6 years)</li> <li>• Design (5 years)</li> <li>• Drawing (5 years)</li> <li>• Graphics (5 years)</li> <li>• Interior Architecture (4,5 years)</li> <li>• Media Art (5 years)</li> <li>• Painting (5 years)</li> <li>• Sculpture (5 years)</li> <li>• Stage Design (5 years)</li> </ul>
<b>DOCTORAL SCHOOL/ PHD (3 YEARS)</b>	<ul style="list-style-type: none"> <li>• PhD in the field of art in the discipline of fine arts and art conservation</li> </ul>
<b>POST-DIPLOMA COURSES</b>	<ul style="list-style-type: none"> <li>• Advertising graphics, publishing graphics and digital media</li> <li>• Artistic Disciplines in Architecture</li> <li>• Mediation of Contemporary Art</li> <li>• Painting</li> <li>• Painting in New Media</li> <li>• Postgraduate Specialisation Course</li> </ul>

## Legal basis of the Academy

The Eugeniusz Geppert Academy of Art and Design in Wrocław is a multi-faculty higher education public institution with registered seat in Wrocław: plac Polski 3/4.

The Academy is acting on the basis of the decision taken by the Minister of Culture and Art on the 30th of March 1946. The current name of the Academy is in use since the 29th of August 1996 (*Official Journal from 1996, no 100, item 462*). The Academy is subordinated to the Minister of Culture and National Heritage and fulfils the legal regulations of the Higher Education Law (*Official Journal from 2018, item 1668*). Wrocław Academy is accredited by the Polish Accreditation Committee (PKA) – the only statutory body in Poland responsible for assessment of quality of education provided by higher education institutions.

## General presentation

The Academy was founded in 1946 as a State College of Fine Arts. Destroyed during the Second World War, it was rebuilt with a substantial help from a painter, Prof. Eugeniusz Geppert, whose name has been added to the name of the Academy in the course of the years. The following decades brought changes in the structure as well as the dynamic development of our institution, which in 1996 was granted the status of the Academy. Today, the Academy of Art and Design in Wrocław plays a major role in the cultural life of Wrocław and Poland, and its international relations extend its impact beyond the Polish borders.

In the academic year 2021/22 the Eugeniusz Geppert Academy of Art and Design in Wrocław received Substantial Equivalency by NASAD – the National Association of Schools of Art and Design, an accrediting organization for art schools

in the United States. This is the highest recommendation that an art academy outside of the United States can achieve and we are the only art academy in Europe that achieved it.

**NASAD sets the standard for Bachelor's, Master's and doctoral degrees, which means that our diplomas are now recognized as equivalent to some of the best ones in the world.**

## Facilities

Plac Polski 3/4  
Room no: 108 M  
[biblioteka.wyp@asp.wroc.pl](mailto:biblioteka.wyp@asp.wroc.pl)

opening hours:  
Mon: 12.00pm – 3.00pm  
Tue: 10.00am – 3.00pm  
Wed: 10.00am–5.00pm  
Thu: 10.00am–5.00pm  
Fri: 10.00am–5.00pm

Readers' service break:  
1.30pm–2.00pm

## Library

The library's collection includes about 15,000 books, about 1,000 magazine annuals, and over 4,000 exhibition catalogues.

The library makes its collection of books and periodicals available throughout the year. Specialized domestic and foreign art magazines, such as Art in America, Artnews, Ceramics, Design, Domus, Form, Graphics, Kunstforum, and Neues Glass, among others, are available in the reading room.

In our library, you can borrow books, browse exhibition catalogs and professional journals, consult full-text databases, use computer workstations, use the study area, use the photocopier and printer (cash only), and use the free high-speed scanner (200 pages/10 minutes) with OCR, making it easier to write a paper or translate text from any language into your native language. We encourage you to explore publications about Polish art.

Books are cataloged in the INTEGRO database (available online). Information on location and access can be found in individual records.

Visit our website for all the necessary information.

## Art supplies shop

Some of the materials necessary to work in the studios are provided by the Academy for free. If you need any extra study material, you will find it in the shop located in the main building. It offers a wide range of art and office materials.

## Canteen

Close to the art materials shop there is the canteen and the cafeteria of the Academy. You can just sit down and drink your morning coffee or try Polish cuisine from the varied menu. An average price for a meal: 20 PLN.

## Luboradów, plein-air contre

The art contre which belongs to the Academy is situated 60 km from Wrocław in picturesque surroundings. The place hosts the students and professors for open-air workshops (painting, sculpture, ceramics), seminars and conferences. The building is fully equipped and furnished with 8 rooms, a kitchen and bathrooms. The contre includes a big Tongkama wood-fired kiln that was built in 2006. The kiln imitates the model that was used in Korea in early Middle Ages for firing ceramics in very high temperatures (1300–1350°C) and is the only one of this kind in Poland.

## Dormitory and accommodation

The dormitory is situated in the old part of the city, 15 minutes walk from the Academy. Each room contains: 1 bed (bedclothes, pillows and quilt are provided), 1 wardrobe,

Plac Polski 3/4  
(ground floor)  
opening hours:  
Mon-Fri: 9.00–17.00  
Sat: 9.00–14.00

Plac Polski 3/4  
(ground floor)  
opening hours:  
Mon-Fri: 9.00–16.00

Luboradów 2  
Municipality Krośnice

ul. H. Pobożnego 9  
50-241 Wrocław  
[akademik@asp.wroc.pl](mailto:akademik@asp.wroc.pl)

1 desk with 1 chair and free access to the Internet. Depending on the standard, in some rooms there is also a fridge. On each floor there is a common kitchen with a fridge and dishes, shared bathrooms with showers and toilets and a studio for artistic use. In the building there is also a laundry room with washing machines and a common room with a TV. In the academic year 2024/2025 the monthly rent was from 680 up to 850 PLN per person depending on the standard. Accommodation is offered in double and triple rooms with or without a private bathroom. The check-in is possible a few days before the beginning of each semester (end of September and mid-February), time of arrival needs to be confirmed directly with the dorm.

The dormitory has only 81 places for both Polish and foreign students and there are always more applications than places. In order to get a place in the dorm you need to contact the dormitory directly and send a special application form.

Please take into consideration the fact that we do not mediate in finding any private accommodation for students who didn't get a place in the dormitory.

If you were not lucky in getting a place in the dorm, you can look for some private accommodation. The offer is quite varied but it takes time to find an appropriate one. The average price for a place in a double room in a private flat is from 800 up to 1300 PLN. Some useful websites where the students can search for a flat/room:

in  
English:



pepehousing.com



asp.wroc.pl/en/  
erasmus/accommodation



basecampstudent.com



erasmusu.com



studentdepot.pl

## The Academy's buildings

ID network:

ASP\_WROC\_STUD

WIFI password:

egeppert

### Main administration building

- Plac Polski 3/4
- ul. A. Frycza-Modrzewskiego 15/17

### Centre for Applied Arts. Innovation Centre

ul. R. Traugutta 19/21

### Art Documentation Centre

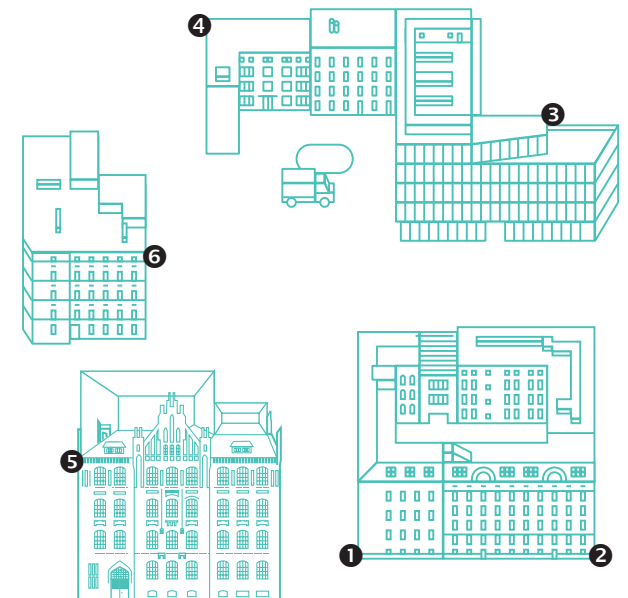
ul. R. Traugutta 19/21

### N2

ul. J. U. Niemcewicz 2

### Dormitory

ul. H. Pobożnego 9



## International Relations and Promotion Department

The International Relations and Promotion Department initiates, organizes and coordinates activities related to the Academy's cooperation with more than one hundred foreign art universities as well as scientific and cultural institutions.

These activities include:

- student and staff exchange,
- coordination of internships,
- annual Summer Art and Design School,
- initiation and support for international projects and programmes,
- organisation of exhibitions and other artistic events with the participation of guests from abroad.

The department also recruits foreign students for the interdisciplinary Master's programme with English as the language of instruction. Moreover, our tasks include the promotion of the Academy on the international and national stage, including the maintenance of the website and social media, production of promotional materials and gadgets and contacts with the media. In all its activities the department tries to contribute to the process of internationalization of education at the Academy. Our motivation is to adapt to the highest world standards and make your stay in Poland an unforgettable adventure.

Mobility  
agreements

**ERASMUS+:** 117 agreements in 38 countries.

**Bilateral agreements:** 20 agreements in 10 countries.

### STUDENT MOBILITY PER YEAR:

50 incoming students / 60 outgoing students.

### STAFF MOBILITY PER YEAR:

15 incoming staff members / 50 outgoing staff members.

## Erasmus+ studies

The International Relations and Promotion Department coordinates the exchange of students under the Erasmus+ Programme and Bilateral Agreements on three levels: Bachelor, Master and PhD excluding diploma years.

Deadline of submitting applications:

- 31 May (winter semester),
- 15 November (summer semester).



information  
and forms

## Erasmus+ internships

We also accept students for internships within the Erasmus+ Programme:

- to one of the studios as lab assistants (professor's acceptance is required).

## Study programmes conducted in English

If you are interested in studying in English as a regular student at our Academy please contact: [studyinenglish@asp.wroc.pl](mailto:studyinenglish@asp.wroc.pl) or visit our website: [asp.wroc.pl/en/candidate](http://asp.wroc.pl/en/candidate).



MFA  
in Visual Arts



Doctoral  
School

## Erasmus+ Incoming teaching and training staff

We invite teachers and administrative staff members to visit our Academy as part of the Erasmus+ Programme. You may conduct lectures and workshops with our students or have a job shadowing in one of our offices. The best time to arrive is between 15 October and 15 May – the active teaching period at our Academy.

If you are interested, please send your Mobility Agreement

to [international@asp.wroc.pl](mailto:international@asp.wroc.pl) or directly to the Departmental Coordinator.



information  
and forms

#### Visiting Professor/ Artist Programme

Under the framework of the Visiting Professor/Artist Programme we are looking for professionals from different parts of the world, with different points of view, academic background and artistic experience to contribute to the Academy's interdisciplinary approach to education.

We offer short-term 5-days visits or an opportunity to join us for the entire semester. Please send your application to: [studyinenglish@asp.wroc.pl](mailto:studyinenglish@asp.wroc.pl).

## During your study time

#### Student card

All exchange students as well as students of programmes conducted in English (except trainees) are given on arrival a student card that confirms a student status in Poland. With the card the student who is under 26 years old benefits from a 50% discount in museums, public transport, railway, cinemas, theatres, etc. all over the country.

#### Buddy system

Exchange students have the opportunity to get a Buddy. A Buddy is a student from the Academy who helps with any kind of situations the foreign student can come across during his/her exchange period in Wrocław. The Buddy also helps the international student to integrate in the student life.

#### Welcome Week

Each year the International Relations and Promotion Department organizes Welcome Week for Master, PhD and

exchange students during which students discover various corners of the Academy and Wrocław as well as get to know each other. Moreover, they have an opportunity to taste traditional Polish dishes or to take part in the Speed Meeting and intercultural workshops.

#### Integration trips

At the beginning of each semester the department organizes a series of integration trips and events for all foreign students, such as one-day trip to the most interesting places around Lower Silesia or a Winter Meeting in December. The cost of the events is covered by the funds of the Erasmus+ Programme.

#### Erasmus+ exhibition

Twice a year, at the end of each semester we organize an exhibition for the exchange students in one of our Museum's display rooms. There, the students can show the works that they created during their stay at the Academy. This is a great experience for the students and for the curator who is always one of the exchange students.

#### Polish language course

Foreign students have the opportunity to attend the Polish language course organized at our Academy for free. The lessons start in October and in February, take place once a week (2 hours) and are credited with 2 ECTS points. The course is finished with a final exam. We provide the same opportunity for regular students of programmes conducted in English.

#### Foreign languages courses

The Institute of Foreign Languages organises courses in four languages: English, French, German and Spanish. The focus is put on teaching the specialist language of art and design, connected with the direction of studies. In our institution two coursebooks have been developed. "English for Printmaking", by Dorota Kopacz and Christopher Nowicki, that teaches specialist language from the area of printmaking. Enriched by reproductions of prints by artists mostly connected with the

Academy, it is both a professional coursebook of English and a beautiful art album.

"Design English", by Beata Ludwiczak, is a coursebook which introduces the students to the language issues connected with interior architecture and industrial design.

## Erasmus+ Departmental Coordinators

### Art Mediation

Maria Bitka  
m.bitka@asp.wroc.pl

### Buddy Programme

Agata Sikora-Jańska  
asikorajanska@asp.wroc.pl

### Ceramics

Jakub Biewald  
j.biewald@asp.wroc.pl

### Drawing

Alicja Pruchniewicz  
a.pruchniewicz@asp.wroc.pl

### Conservation and Restoration of Artworks in specialization of Conservation and Restoration

Łukasz Karkoszka  
l.karkoszka@asp.wroc.pl

### Design

Agata Danielak-Kujda  
adan@asp.wroc.pl

### Foreign Languages

Stanisław Chwiszczuk  
s.chwiszczuk@asp.wroc.pl

### Glass

Antonina Joszczuk-Brzozowska  
a.joszczuk@asp.wroc.pl

### Graphic Design

Maciej Jaroszczuk  
m.jaroszczuk@asp.wroc.pl

### Interior Architecture

Patrycja Mastej  
p.mastej@asp.wroc.pl

### Media Art

Maja Wolińska  
m.wolinska@asp.wroc.pl

### MFA in Visual Art

Emilia Staniek  
e.staniek@asp.wroc.pl

### Painting

Łukasz Huculak  
lhu@asp.wroc.pl

### Printmaking

Anna Juchnowicz  
a.juchnowicz@asp.wroc.pl

### Stage Design

Damian Banasz  
db@asp.wroc.pl

### Sculpture

Karolina Freino  
kfr@asp.wroc.pl

## Grading system

POLISH GRADE		ECTS GRADE *	
5,5	Celujący	A	Excellent
5,0	Bardzo dobry	B	Very good
4,5	Dobry plus	C	Good
4	Dobry	D	Satisfactory
3,5	Dostateczny plus	E	Sufficient
3,0	Dostateczny	E	Sufficient
2,0	Niedostateczny	FX	Fail (some more work required before the credit can be awarded)
		F	Fail (considerable further work is required)

\*ECTS – European Credit Transfer System



# 02

## FOREIGNERS IN POLAND

### Poland

#### Geographical location

Poland is situated in central Europe and its neighbours are: Germany, the Czech Republic, Slovakia, Ukraine, Belarus, Lithuania and Russia. The borders are mostly natural. The whole southern part is covered with almost 20 different mountain ranges, the North is lined by the Baltic Sea (524km coastline) and the West by two rivers: the Oder river and the Eastern Nysa. Among main ranges of the mountains there are: the Tatra Mountains with the highest peak in Poland, Rysy (2499m), the Beskidy (the highest peak: Babia Góra 1725m), the Sudety and the Karkonosze (the highest peak: Śnieżka 1602m), the Bieszczady Mountains (the highest peak: Tarnica 1346m). Besides mountains and the seaside, the Polish territory is covered with many kilometers of lakes – the biggest ones are situated in northern parts – Pomerania, Masuria, Kashubia.

#### Climate

Make sure that you have clothes for a beach and for snow! The climate in Poland is moderate, however, the winter can be very cold and the summer very hot. The average temperature during winter time is from -5° to 0°C but it can go down even to -15°C! The coldest month is February. Snow is not a rule, one year winter can be almost without snowfalls, another year there can be plenty of it. In summer time there is a lot of sunshine interlaced with periods of heavy rainfalls and storms. The hottest months are July and August (25–35°C).

## Foreigners in Poland

### EU-citizens

European Union citizens are permitted to stay in Poland for a period not longer than 3 months without the necessity of registering their residence. If they want to stay longer (one higher education semester lasts 5 months), they need to go to the Registration Office in order to register their stay no later than 45 days before the end of the deadline of 3 months counted from the day of entry to the territory of Poland. The documents that you need to submit are: special application form (available at the Registration Office), copy of your passport or ID card, copy of your health insurance card (only European Health Insurance Card is accepted without the necessity of a certified Polish translation or other insurance issued in Polish language), copy of the registration in a flat in Poland (dormitory or private accommodation), confirmation of studies from our Academy.

### Non-EU citizens

Some of non-EU countries are allowed for visa-free travels, hence their citizens can stay in Poland legally up to 90 days. List of those countries can be found on the website: [udsc.gov.pl](https://udsc.gov.pl)

However, it is always better to apply for a national visa type D, which gives you guarantee of legal stay over 3 months up to a year.

The visa's expiry date does not equal its length of validity. Its expiration date can be for a year but the actual legal stay can be 150 days. You can find that on your visa blank.

If you are eager to stay in Poland for a longer period of time than it is provided by your visa you need to apply for a temporary residence permit, on the last day of your visa's validity.

Depending on individual case and year of your studies you will get a residence permit either for up to 15 months for the first time or for up to 3 years for the following applications.

## Registration Office for Foreigners Urząd Wojewódzki

Urząd Wojewódzki  
(Voivodeship Office of  
Lower Silesia in Wrocław)

Plac Powstańców Warszawy 1  
50-951 Wrocław



duw.pl



## Health Insurance

The Academy will cover health insurance if the person is:

- 1) a Polish citizen, aged over 26 and is not subject to health insurance as a member of the insured person's family or on a basis of a different title.
- 2) a foreigner and studies or undertakes education in Poland and is recognized as a person of Polish origin within the meaning of the provisions on repatriation or has a valid Polish Card and cannot be insured on the basis of different title. A student may voluntarily insure himself/herself by concluding a relevant contract with the National Health Fund (Narodowy Fundusz Zdrowia) and then should provide adequate documents to the Academy.

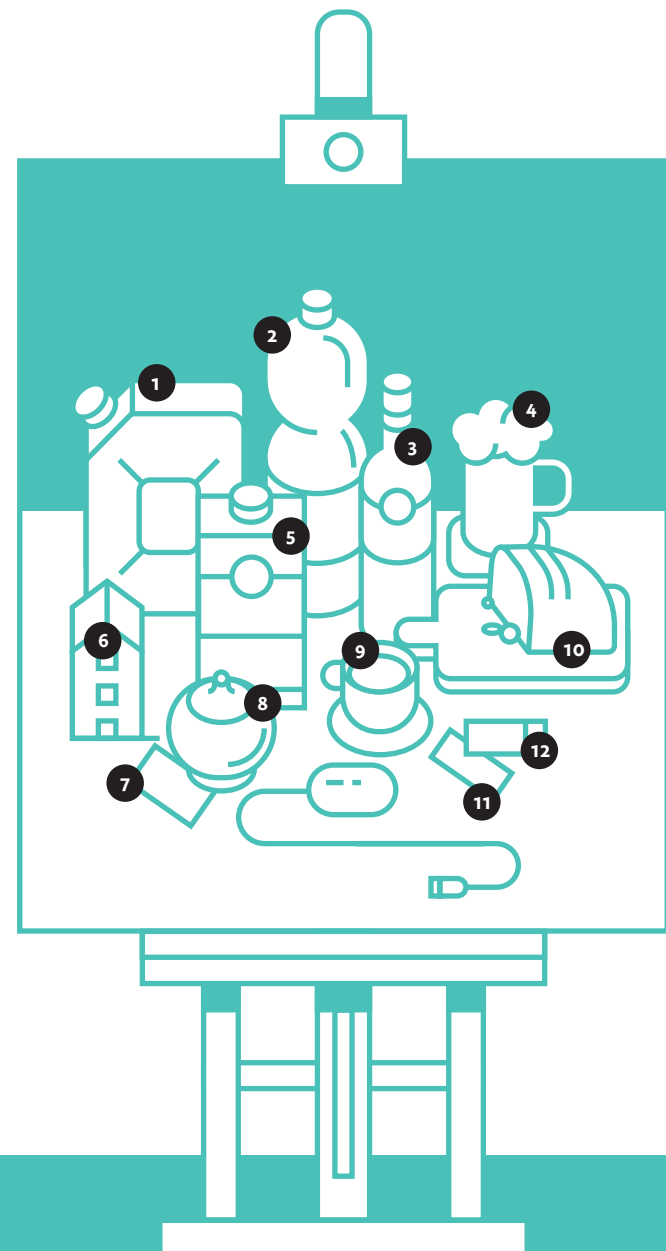
The European Health Insurance Card is recommended for EU citizens when they plan to travel to Poland. The EHIC usually covers the basic medical care such as diagnostic tests, a consultation with a specialist and a stay in a hospital, but first the patient has to visit a GP obligatorily. Depending on the agreement between Poland and your home country either you pay for medical consultation and the money will be returned by your country after submitting your invoice or you don't need to pay at all. Before your arrival to Poland please get more information in the European Health Insurance Centre in your country. If you decide to visit a private specialist or a GP, the price is from 200–300 PLN for a visit. For a visit in a dental clinic in Poland you have to pay anyway, even if you have your European Health Insurance Card. The student who is not a citizen of a European Union Member State or a member state of the European Free Trade Agreement (EFTA) as well as not subject to compulsory health insurance in the Republic of Poland or in another EU Member State or a Member State of the European Free Trade Agreement (EFTA) may independently insure himself/herself by concluding an appropriate contract with the National Health Fund.

## Polish food

Polish cuisine is tasty and hearty but high in calories content. A lot of dishes, like the Polish culture, were influenced by other nations like Jewish, Hungarian, German and Ukrainian. You can't leave Poland without tasting pierogi (kind of ravioli with different filling, the famous ones are pierogi ruskie with cottage cheese and potatoes inside), gołąbki (pork meat with rice wrapped in cabbage) or bigos (sauerkraut with sausages, meat and mushrooms), gulasz (small pieces of meat in thick sauce), kluski śląskie (Silesian dumplings made of potatoes) or kotlet schabowy (traditional breaded pork cutlet). Poles eat much pork and potatoes, they have also unique pickled cucumbers and sauerkraut that you will not find anywhere else. Poles start their day with śniadanie (breakfast) – they usually eat sandwiches with cheese or ham. Obiad (lunch time) starts between 13.00–16.00 and consists of a big meal: an obligatory soup (pomidorowa – tomato soup, barszcz – red beetroot soup, rosół – a chicken soup and żurek are typically Polish), the main course is usually a piece of meat, potatoes or rice, and salad. Kolacja (supper) is usually the same as breakfast. Polish sweet specialty is sernik (cheese cake), makowiec (poppy seed cake) and pączki (doughnuts).

## Survival still life

1. 1 ltr of petrol 6 PLN
2. 1 bottle of mineral water 2 PLN
3. 1 bottle of wine 20–100 PLN
4. 0.5 ltr of beer 5 PLN  
(12–25 PLN in pub)
5. 1 ltr of milk 4 PLN
6. Renting room 800–1300 PLN  
(per month)
7. 1 opera ticket 50–200 PLN
8. 1 kg of sugar 3 PLN
9. 1 coffee or tea in café 10–18 PLN
10. 1 loaf of bread 5–9 PLN
11. 1 theatre ticket 40–100 PLN
12. 1 cinema ticket 20–28 PLN



## Bank holidays

1 November	All Saints' Day
11 November	Independence Day
24 December	Christmas Eve
25–26 December	Christmas Days
1 January	New Year
movable feast	Easter Sunday
movable feast	Easter Monday
1 May	Labor Day
3 May	Constitution Day
movable feast	Corpus Christi
15 August	Assumption Day

## Polish language or tongue twister

The Polish language belongs to the West-Slavic group of the Indo-European languages together with Czech and Slovak. Polish, like other Indo-European languages, shares some Latin grammar and vocabulary. There are 3 tenses (past, present, future), 2 numbers (singular and plural), and 3 genders (masculine, feminine, neuter). There are no articles but Polish, like Latin, is an inflectional language that distinguishes 7 cases, defining the noun usage in a sentence. This feature makes our mother tongue difficult to master but practice makes perfect.

## Survival vocabulary

Good morning — dzień dobry	Dean's Office — dziekanat
Hi — cześć	Library — biblioteka
How are you? — co słychać?	Bookshop — księgarnia
I am — jestem	How much is it?
Goodbye — do widzenia	— ile to kosztuje?
Thank you — dziękuję	Bread — chleb
I am sorry, Excuse me	Milk — mleko
— przepraszam	Coffee — kawa
Please — proszę	Tea — herbata
Yes — tak	Beer — piwo
No — nie	Shop — sklep
I would like — chciałbym/	Ticket — bilet
chciałabym	Stamp — znaczek
I don't know — nie wiem	Letter — list
I don't understand	I'm lost — zgubiłem/
— nie rozumiem	zgubiłam się
I don't speak Polish	Help! — pomocy!
— nie mówię po polsku	Fire — pożar
Where is...? — gdzie jest...?	I need a doctor
Post Office — poczta	— potrzebuję lekarza.
University — uniwersytet	I'm looking for... — szukam...
Street — ulica	What's your name?
Pharmacy — apteka	— Jak masz na imię?
Hospital — szpital	My name is Emma
Fine Arts Academy	— Mam na imię Emma
— Akademia Sztuk Pięknych	Where are you from?
Dormitory — akademik	— Skąd jesteś?
Canteen — stołówka	I'm from... — Jestem z...
Cinema — kino	How old are you?
Bus/tram stop — przystanek	— Ile masz lat?
autobusowy/tramwajowy	I'm ... years old — Mam ... lat
Toilet — toaleta	Do you speak English?
Lecturer — wykładowca	— Mówisz po angielsku?
Dean — dziekan	



# 03

## WROCLAW

Population: 700 000

Total area: 29 390 km<sup>2</sup>

### General information

Wrocław, the capital of Lower Silesia, is one of the most beautiful and oldest cities in Europe. It is Poland's third-largest city, located on the Oder river in the south-west part of the country at the feet of the Sudety Mountains.

Wrocław is commonly called the Venice of Central Europe because of its 12 islands and over 100 bridges (even more than in Venice!).

### Historical sketch

During 1000 years of history, Wrocław often changed its face and political status. Going the rounds from one country to another (Bohemian, Hungarian, Austrian-Prusian and German), Wrocław eventually became Polish after the Second World War. Foreign influences have always been present in the history of the city. On your arrival you will certainly feel the energetic multicultural atmosphere.

Wrocław is the meeting place, the place of international conferences, festivals, fairs and exhibitions attracting people from all over the world. Placed in the central part of Europe, Wrocław is a perfect logistics center, it has a well-developed infrastructure (main train stations, international airport, inland waterway, modern roads system and highway). Good location has contributed to the industrial and economical development of the city and has increased the number of foreign investments from all over the world, mainly from Europe.

Wrocław is also one of the most important research and

### Music festivals

development centres. 21 higher institutions give instruction to about 100 000 students. No matter the season of the year, day or night, Wrocław is always teeming with life. The well-developed tourist infrastructure and rich programme of cultural events multiply the number of visitors from all over the world.

There are famous international music festivals which take place in Wrocław: International Festival "Vratislavia Cantans", "Jazz upon Odra", "Singing Actors' Festival".

### International events

In 2012 Wrocław was one of the European host cities for UEFA EURO 2012 and in 2016 the city became the European Capital of Culture (together with a Spanish city San Sebastian). A year later, in 2017, Wrocław organized the World Games which promote sporting disciplines that are not contested in the Olympic Games.

### Architecture

The architecture of Wrocław is unique too, every period has left its architectural heritage making the city a mosaic of different styles. A strong catholic tradition can be observed in numerous sacred art objects from the Middle Ages until modern times. If you are tired of visiting monuments and other historical attractions, you can take a breath sitting in the beautiful Botanic Garden or go to the greatest and oldest park of Wrocław, the Szczytnicki Park. If you want to work your body – the sport and fitness infrastructure is also well-developed.

### Wroc-love – the city of dwarves

You can find them everywhere around here! The Wrocław Dwarves stand about a foot tall, are made of bronze, and look exactly like the ones from fairytales. The dwarves took over all the city and became the symbol of Wrocław. They are still growing in numbers and it is hard to keep track of

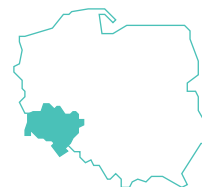
how many there are.

Their place of predilection is the Market Square and its surroundings, they climb public lamps, go fishing on river banks and watch pedestrians carefully from the most unexpected places. In short, they keep an eye on the city and its inhabitants. They are not alone, Papa Dwarf rules in ul. Świdnicka, near the Market Square.

## Lower Silesia

Main cities:

1. Wrocław
2. Jelenia Góra
3. Kłodzko
4. Wałbrzych
5. Legnica



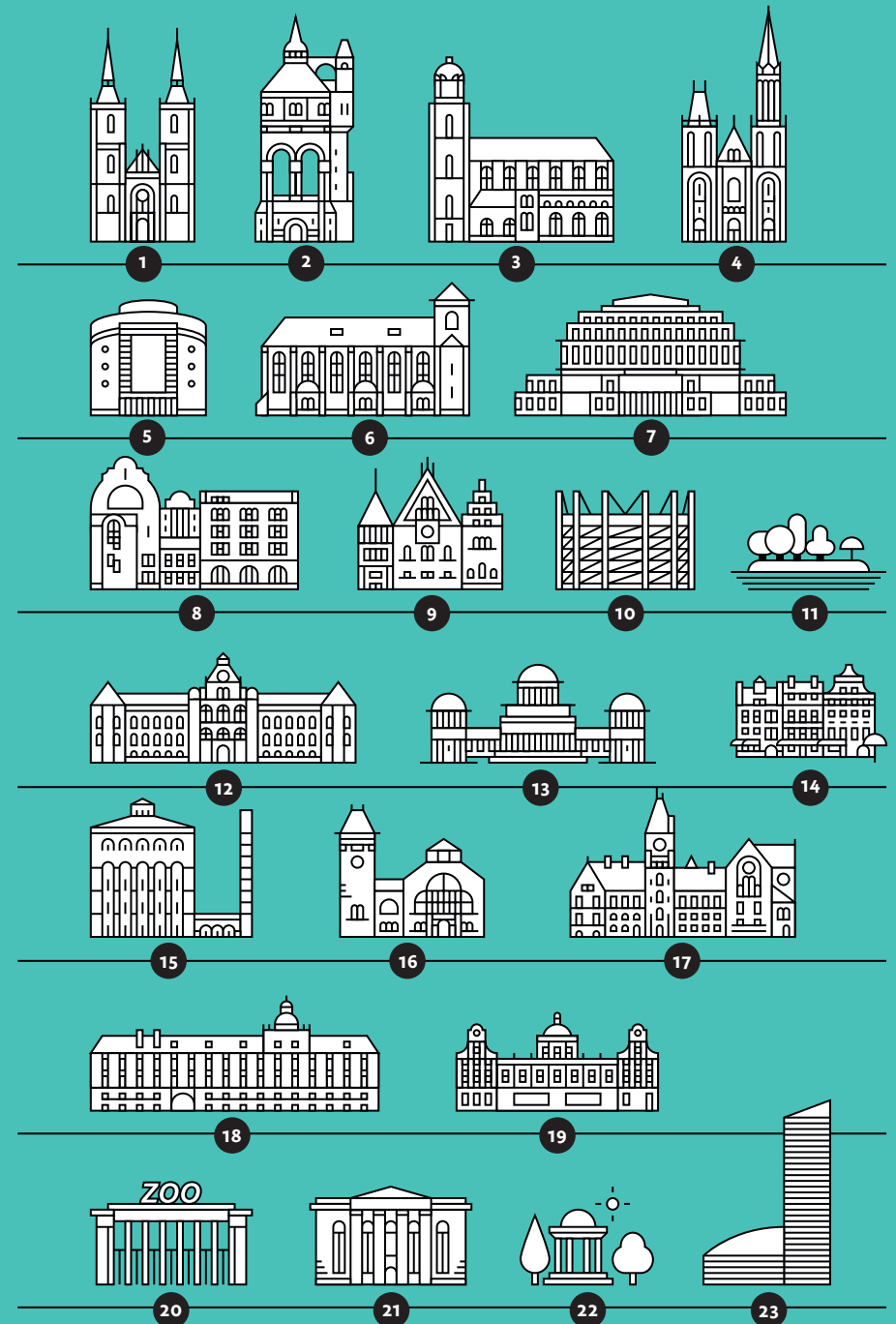
The region of Lower Silesia is one of the most prosperous regions in Poland. It is located in the south-west part of the country and is a neighbor with Germany from the west and with the Czech Republic from the south. This location is very advantageous for economical and cultural reasons. The region is mostly mountainous, the southern part is lined by 300 km of a range of mountains called Sudety. The rest of the region remains lowland. The various landscapes and quite important heritage of Polish art and history are the factors of a developed tourist activity.

There are three monuments and places of the region that have been inscribed on the list of UNESCO World Heritage Sites: The Centennial Hall in Wrocław, the Churches of Peace in Świdnica and Jawor and the Muskau Park by the Nysa River (shared with Germany).

The region of Lower Silesia is famous for its castles. There are about 400 castles, palaces or ruins and fortresses in the region that were built since the medieval times. The most frequently visited and remarkable are: Czocha (in Leśna), Książ (in Wałbrzych), Chojnik (in Jelenia Góra), Bolków, Grodziec and also monasteries such as the Cisterian Abbey in Lubiąż.

## PLACES TO SEE IN WROCŁAW

- |  |   |
|--|---|
| 1. Cathedral Island<br>(Ostrów Tumski)     | 14. Salt Square                             |
| 2. Old Water Tower                         | 15. Hydropolis                              |
| 3. St. Elizabeth church                    | 16. City Hall                               |
| 4. Church of St. Michael<br>the Archangel  | 17. Building of the<br>Architecture Faculty |
| 5. Contemporary Museum                     | 18. University of Wrocław                   |
| 6. Church of St. Mary<br>on the sand       | 19. Ossolineum                              |
| 7. Centennial Hall                         | 20. Zoo                                     |
| 8. Natural History Museum                  | 21. Synagogue Under<br>a White Stork        |
| 9. Market Square                           | 22. Szczytnicki Park                        |
| 10. Panorama of the Battle<br>of Ractawice | 23. Sky Tower                               |
| 11. Malt Island                            |   |
| 12. National Museum                        |   |
| 13. Four Domes Pavilion                    |   |



# IMPORTANT PHONE NUMBERS

Police

**997**

Gas emergency

**992**

Ambulance

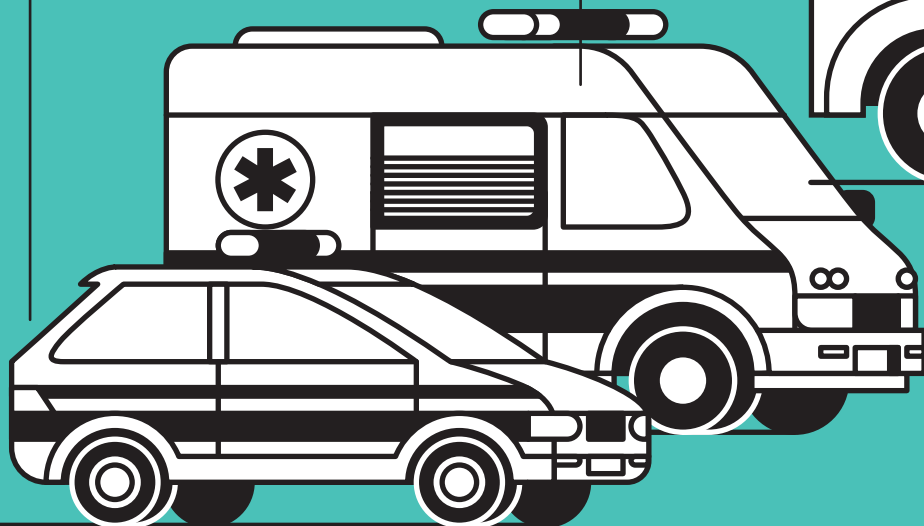
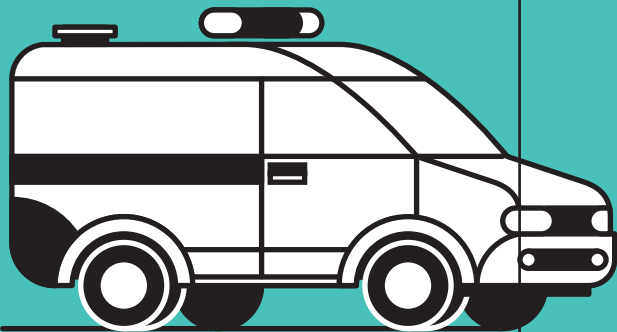
**999**

Fire brigade

**998**

Pan-european emergency number

**112**



## Public transport in Wrocław

Customer  
Service  
Office

ul. Grabiszyńska 9  
Mon-Fri: 8.00–18.00  
Sat: 9.00–14.00

The system of urban communication is quite easy and comfortable. You can travel by bus or by tram depending on your destination.

The frequency of the lines is from 7 to 15 minutes depending on the line and the time of the day. The timetable is posted at every line stop. However, probably it will be easier for you to use a friendly app: [jakdojade.pl](http://jakdojade.pl), which will help you to find your location with GPS and find the shortest and most comfortable way.

### Urban Card

For temporary tickets over 7 days an Urban Card is required (Wrocławska Karta Miejska). In order to get the Urban Card you can use the app: [www.urbancard.pl/aplikacja-mobilna-urbancard](http://www.urbancard.pl/aplikacja-mobilna-urbancard) or go to the Customer Service Office. You will be asked to fill in an application form and pay for your first temporary ticket. After 5 working days the ready card can be picked up only personally by the applicant. You can also buy the tickets using your student card. In order to activate the card, you will also need to visit the Customer Service Office.

### Where to buy tickets?

Tickets can be bought mainly in buses/trams which are all equipped with ticket machines. Please keep in mind that you can pay there only with contactless card. Other kinds of tickets are available in ticket machines, post offices and in some kiosks. Passengers may be asked by controllers to show their tickets during the day and at night. Travelling without a ticket is punished with a fine.

## Trams and buses

They are marked with numbers and letters. When the number on the tram is printed on a yellow board it means that the itinerary has been temporarily changed. Information about the new itinerary is always posted at the line stop.

### Travel by taxi

Taxis in Wrocław are a convenient way to get around, particularly if you're traveling with luggage or need to reach a specific location quickly. Taxis are available at designated taxi ranks, especially in busy areas like the airport or train stations, although it might be easier to use a taxi app or call for a taxi.

Look for licensed taxis with a company logo and a roof light that says "TAXI." The driver's ID should also be visible inside the taxi.

Always ensure the meter is running to avoid being overcharged. If you're unsure about the fare, you can ask the driver for an estimate before starting your journey.

Many taxi drivers speak at least basic English, but it can be helpful to have your destination written down, especially if it's a lesser-known address.

### By bike

Bicycle lines (app. 1200 km in total) are everywhere in the city and it is really easy to get round by bike. Through Wrocław runs an international tourist line EuroVelo which starts in Gdańsk (North of Poland) and ends in Pula (Croatia). If you have no bicycle you can rent it or you can buy it in

a second hand market for a lower price, e.g. Sunday Flea Market near Auchan, Korona Shopping Centre, ul. Krzywoustego 126 (free shuttle bus from pl. Grunwaldzki).

In June 2011 the city of Wrocław introduced a rent bike system which enables bicycle users to ride around the city using bike as any public transport. The network is very good and there are lots of renting points all over the city. To use the bike you need to register on the website and pay 10 PLN. First 20 minutes of riding is free each time you rent. The first hour costs 3 PLN and every next hour – 6 PLN. To rent/return the bike you need to have a mobile phone with a Polish SIM card.

### By boat

Zatoka Gondoli  
(Gondola's Bay)  
ul. Jana Ewangelisty  
Purkyniego  
(next to the National  
Museum)

Wrocław – the city of islands – has a very well-developed inland waterway transport. There are two logistics inland ports but the river can be used by tourists or private people as well. Close to the National Museum you can rent a canoe or a boat which will carry you on a beautiful journey along the river. The harbor is called Gondola's Bay (Zatoka Gondoli) and is opened from April to October. You can also go to the nearest harbor on Wyspa Piaskowa or nearby Hala Targowa you enter the boat for tourists and enjoy the cruise with a guide. One of the nicest routes is the eastern part of the city – you will admire a beautiful view of the Cathedral, the National Museum, then you will pass under the famous Grunwald Bridge and arrive directly at the Zoo.

### By plane

Nicolaus Copernicus  
Wrocław Airport  
[airport.wroclaw.pl](http://airport.wroclaw.pl)

The Wrocław Airport is located about 10 km from the city centre. It is connected with the Main Railway Station by the public transport, bus number 106 and 129. The buses run four times an hour and the journey lasts about 45 minutes to the railway station (bus no. 106) or to the centre (bus no. 129).

### By train

Train tickets:  
[pkp.pl](http://pkp.pl)

With the student card, you can receive a 51% discount for every kind of train. Train tickets can be bought on the train station, on the Internet and directly on the train (attention: buying tickets on the train is charged additionally). In Poland there are two different train companies: InterRegio and PKP Intercity and their tickets cannot be used interchangeably. The main train station in Wrocław is called “WROCŁAW GŁÓWNY” and is located in the city centre, 5–10 minutes from the Market Square on foot. Online schedule of the trains and prices of the tickets: [pkp.pl](http://pkp.pl)

# PUBLIC TRANSPORT IN WROCŁAW

## 1. CITY BUSES

Daily buses numbers:  
100–150  
Fast buses numbers:  
A, D, K, N

## 2. TAXI

## 3. PLANES

Wrocław Airport  
ul. Graniczna 190  
54-530 Wrocław  
  
[airport.wroclaw.pl](http://airport.wroclaw.pl)

## 4. TRAINS

Main Railway  
Station  
ul. Piłsudskiego 105  
50-085 Wrocław  
  
Train tickets:  
[pkp.pl](http://pkp.pl)

## 5. TRAMS

Trams numbers:  
0–78

## 6. BOATS

The Gondola's Bay  
ul. Jana Ewangelisty  
Purkyniego 9  
50-155 Wrocław  
  
[gondole.eu](http://gondole.eu)

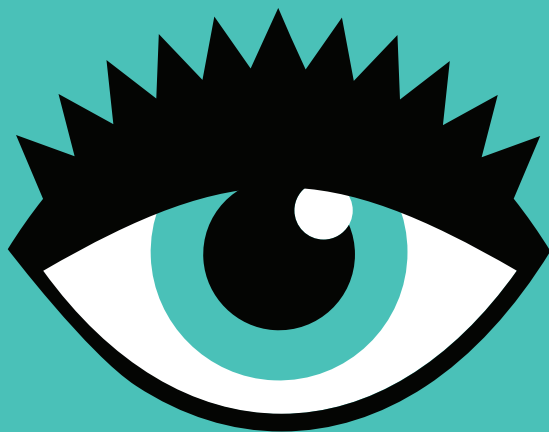


---

## NOTES

---

[illegible]



THE EUGENIUSZ GEPPERT  
ACADEMY OF ART AND DESIGN  
IN WROCLAW



Funded by  
the European Union