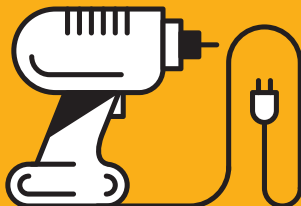
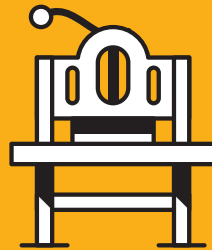
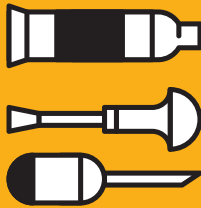
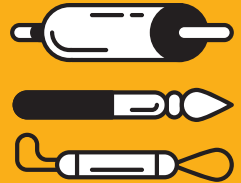
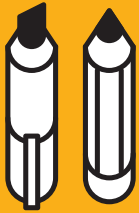


# GUIDE





# GUIDE

**For International Students at  
The Eugeniusz Geppert Academy  
of Art and Design in Wrocław**

# CONTENTS

## 01

### GENERAL PRESENTATION OF THE ACADEMY

<b>6</b>	The Academy's representatives and contact addresses	<b>22</b>	The Academy's buildings
<b>8</b>	Academic calendar	<b>23</b>	Facilities
<b>9</b>	The Academy in numbers	<b>26</b>	The International Relations and Promotion Department
<b>10</b>	Faculties	<b>28</b>	During your study time...
<b>20</b>	Legal basis of the Academy	<b>30</b>	Erasmus+ Departmental Coordinators
<b>20</b>	General presentation	<b>31</b>	Grading system

# 02

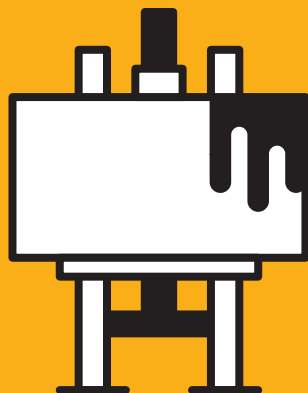
## FOREIGNERS IN POLAND

- 33** Poland
- 34** Foreigners in Poland
- 37** Polish food
- 38** Survival still life
- 40** Bank holidays
- 40** Polish language or tongue twister
- 41** Survival vocabulary

# 03

## WROCLAW

- 43** General information
- 45** Lower Silesia
- 46** Places to see in Wroclaw
- 48** Important phone numbers
- 50** Public transport in Wroclaw



# 01

---

## GENERAL PRESENTATION OF THE ACADEMY

---

The Eugeniusz Geppert Academy of Art and Design offers top-of-the-range art and design education on three levels – Bachelor, Master and PhD. We are a state university and educate students on full time and part time basis in five faculties: Faculty of Painting, Faculty of Sculpture and Art Mediation, Faculty of Graphics and Media Art, Faculty of Interior Architecture, Design and Stage Design and Faculty of Ceramics and Glass.

Our main building is located in the historical part of Wrocław and the second building – The Centre of Applied Arts and Innovation – is the state-of-the-art building with ultra-modern studios and facilities.

## The Academy's representatives and contact addresses

### **The Eugeniusz Geppert Academy of Art and Design in Wrocław**

Plac Polski 3/4, 50-156 Wrocław

phone: +48 71 343 80 31

[www.asp.wroc.pl](http://www.asp.wroc.pl)

[www.facebook.com/aspwroc](https://www.facebook.com/aspwroc)

[www.instagram.com/asp\\_wroclaw/](https://www.instagram.com/asp_wroclaw/)

### **Centre for Applied Arts and Innovation**

ul. Traugutta 19/21

50-416 Wrocław

phone: +48 71 343 84 51

### **Art Documentation Center**

Krzysztof Pachurka, MA

ul. Traugutta 19/21

50-416 Wrocław

phone: +48 71 343 84 51, ext. 117

[muzeum@asp.wroc.pl](mailto:muzeum@asp.wroc.pl)

### **Dormitory**

Magdalena Kowalczyk, MA

ul. Henryka Pobożnego 9

50-241 Wrocław

phone: +48 71 321 03 06

+48 71 321 55 68

[akademik@asp.wroc.pl](mailto:akademik@asp.wroc.pl)

### **Rector**

Prof. Wojciech Pukocz

phone: +48 71 334 80 31, ext. 222

[rector@asp.wroc.pl](mailto:rector@asp.wroc.pl)

### **Vice-Rector for Scientific Affairs and Cooperation with External Bodies**

Ac. Prof. Marta Płonka, PhD

phone: +48 71 334 80 31, ext. 213

[prornauk@asp.wroc.pl](mailto:prornauk@asp.wroc.pl)

### **Vice-Rector for Education and Student Affairs**

Ac. Prof. Beata Mak-Sobota, PhD

phone: +48 71 334 80 31, ext. 213

[prordyd@asp.wroc.pl](mailto:prordyd@asp.wroc.pl)

### **Vice-Rector for International Relations and Promotion**

Ac. Prof. Michał Staszczak, PhD

phone: +48 71 334 80 31, ext. 323

[prorprom@asp.wroc.pl](mailto:prorprom@asp.wroc.pl)



### **THE INTERNATIONAL RELATIONS AND PROMOTION DEPARTMENT**

pl. Polski 3/4  
50-156 Wrocław, Poland  
room no. 215 b, 216, 217

#### **Head of Department**

Aleksandra Zaczek-Gbiorczyk, MA  
phone: +48 71 334 80 31, ext. 239  
promocja@asp.wroc.pl  
room no. 216

#### **Erasmus+ Institutional Coordinator**

Anna Kida, MA  
phone: +48 71 334 80 31, 232  
erasmus@asp.wroc.pl  
room no. 217

#### **Studies in English**

##### **Doctoral School, MFA – recruitment**

Paulina Zaweracz, MA  
phone: +48 71 334 80 31, ext. 311  
studyinenglish@asp.wroc.pl  
room no. 217

#### **International cooperation**

Kinga Bacewicz, MA  
phone: +48 71 334 80 31, ext. 311  
international@asp.wroc.pl  
room no. 217

#### **Promotion**

Aleksandra Niemiec, MA  
phone: +48 71 334 80 31, ext. 239  
a.niemiec@asp.wroc.pl  
room no. 215 b

### **HEAD OF STUDY PROGRAMMES CONDUCTED IN ENGLISH**

Zuzanna Dyrda, PhD  
z.dyrda@asp.wroc.pl  
phone: +48 71 343 80 31, ext. 306  
room no. 215 a

### **DOCTORAL SCHOOL – DEAN'S OFFICE**

Marta Włodarczyk, MA  
m.wlodarczyk@asp.wroc.pl  
phone: +48 71 343 80 31, ext. 315  
room no. 102 a

## Academic Calendar

**WINTER SEMESTER:**

04.10.2021–30.01.2022

**Examination session:**

31.01.2022–13.02.2022

**Winter break:**

14.02.2022–20.02.2022

**Resit exam session:**

21.02.2022–27.02.2022

**Days off:**01.11.2021, 11.11.2021,  
24.12.2021–02.01.2022,  
06.01.2022**SUMMER SEMESTER:**

21.02.2022–13.06.2022

**Examination session:**

14.06.2022–27.06.2022

**Summer holiday:**

28.06.2022–30.09.2022

**Resit exam session:**

19.09.2022–25.09.2022

**Days off:**13.04.2022–19.04.2022,  
01.05.2022–03.05.2022,  
16.06.2022

# THE ACADEMY IN NUMBERS

**1275**

students

**268**

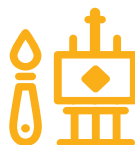
teaching  
staff

**135**

administration  
staff





**PL****Wydział Malarstwa****FACULTY  
OF PAINTING****Dean's office  
secretary**

Plac Polski 3/4  
room no. 116 M  
phone +48 71 334 47 21  
dziekanatmirz@asp.wroc.pl

**Description  
of the faculty**

The Faculty of Painting educates students in painting, drawing as well as curatorial studies as it consists of Painting Departments. Studies covering the group of majors, supported by knowledge acquired in the Institute of History of Art and Philosophy, the Institute of Foreign Languages and numerous optional studios ensure the comprehensive preparation of a young prospective artist for future creative and professional activity.

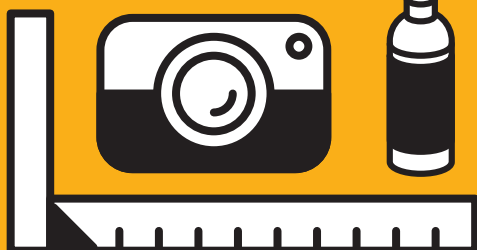
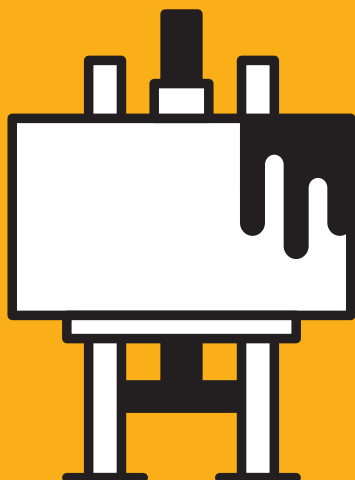
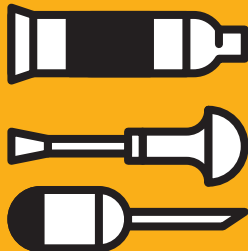
**Programmes**

Painting \_\_\_\_\_ Malarstwo

**Authorities**

---

Dean: assoc. prof. Marta Borgosz, PhD  
Vice-dean: assoc. Prof. Jacek Jarczewski, PhD



PL

Wydział Rzeźby  
i Mediacji Sztuki

## FACULTY OF SCULPTURE AND ART MEDIATION



Dean's office  
secretary

Plac Polski 3/4  
room no. 102 B  
phone tel: +48 71 343 80 31, ext. 268  
dziekanatrzym@asp.wroc.pl

Description  
of the faculty

The Faculty of Sculpture and Art Mediation offers teaching in two fields of study: Sculpture and Art Mediation. While studying Sculpture, students explore how to shape a block in relation to its surroundings, they learn about digital technologies (3D) and design issues. Students have excellent technical facilities at their disposal, as we have the best sculpting technique studios in Poland. Art mediation combines practice and art theory. Its aim is to engage in the discourse between art and audience, artist and audience, critic/curator and market requirements.

Programmes

Sculpture	_____	Rzeźba
Art Mediation	_____	Mediacja Sztuki

Authorities

Dean: assoc. prof. Grzegorz Niemyjski, PhD  
Vice-dean: assoc. prof. Maria Wrońska, PhD



PL

Wydział Grafiki  
i Sztuki Mediów

## FACULTY OF GRAPHICS AND MEDIA ART



Dean's office  
secretary

Plac Polski 3/4  
room no. 119 M  
phone: +48 71 334 47 27  
ama@asp.wroc.pl

Description  
of the faculty

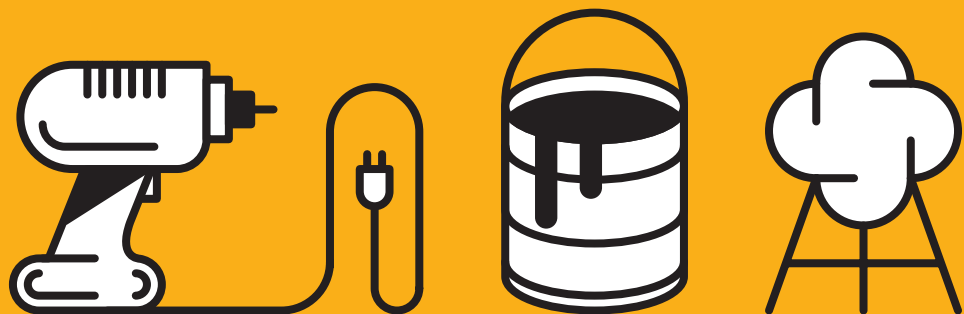
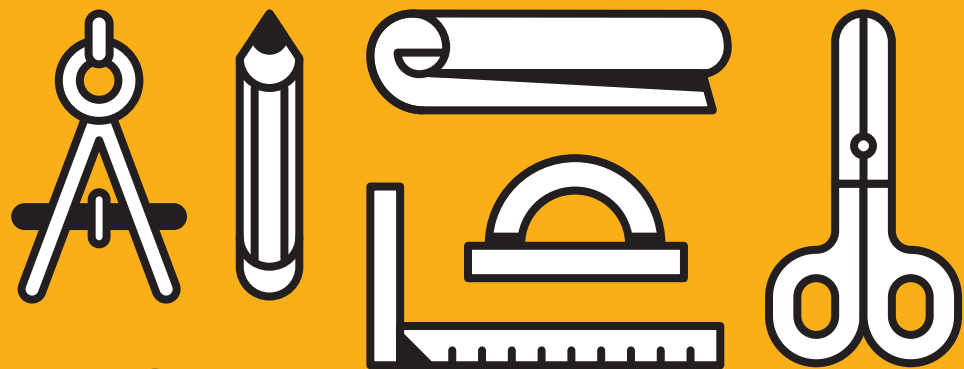
The Faculty of Graphics and Media Art engages students in a variety of printmaking processes and methods of communication, so it enables students to become fluent in all forms of the graphic language. The traditional and modern methods of printmaking and digital printing are taught – the faculty adheres to the well-established methods of the Polish tradition while encouraging experimental approaches. The Department of Media Art offers a chance to learn the practicalities and the theory of media art and the connection between art and science in new media.

Programmes

Printmaking	Grafika Artystyczna
Graphic Design	Projektowanie Graficzne
Media Art	Sztuka Mediów
Photography and Multimedia	Fotografia i Multimedia

Authorities

Dean: assoc. prof. Marek Grzyb, PhD  
Vice-dean: assoc. prof. Anna Trojanowska, PhD



PL

Wydział Architektury  
Wnętrz, Wzornictwa  
i Scenografii

## FACULTY OF INTERIOR ARCHITECTURE, DESIGN AND STAGE DESIGN



### Dean's office secretary

Plac Polski 3/4  
room no. 104 M  
phone: +48 71 334 47 14  
dziekanatawiw@asp.wroc.pl

### Description of the faculty

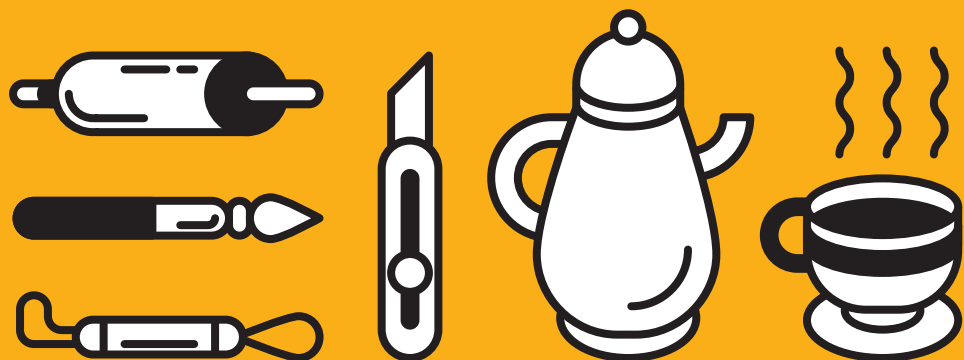
The Faculty of Interior Architecture, Design and Stage Design offers studies in Interior Architecture and Design as well as Stage Design. The studies programme enables students to work within a range of interior architecture techniques. They are also taught to respond to the needs of design industry while being equipped with a wide range of skills and knowledge covering areas from humanistic studies to general knowledge studies. The faculty strongly encourages lifelong learning and awareness of human sciences, when pursuing the quest of making art.

### Programmes

Interior	_____	Architektura
Architecture		Wnętrz
Design	_____	Wzornictwo
Stage Design	_____	Scenografia

### Authorities

Dean: assoc. prof. Agata Danielak-Kujda, PhD  
Vice-dean: assoc. prof. Dominika Sobolewska, PhD



PL

**Wydział Ceramiki  
i Szkła**

## **FACULTY OF CERAMICS AND GLASS**



**Dean's office  
secretary**

Plac Polski 3/4  
room no. 105 M  
phone: +48 71 334 47 16  
dziekanatcisz@asp.wroc.pl

**Description  
of the faculty**

The Faculty of Ceramics and Glass consists of three departments and educates students in design and creation as well as conservation and restoration of glass and ceramics. Based on enduring pre-war traditions brought to Wrocław by professors from the Academies in Warsaw and Cracow, and from ceramics plants and glassworks located in Lower Silesia, the faculty prepares students for independent activities as designers. By familiarising students with materials and diversified techniques these departments create possibilities for personal artistic expression.

**Programmes**

Art and Design of Ceramics	Sztuka i Wzornictwo Ceramiki
Art and Design of Glass	Sztuka i Wzornictwo Szkła
Conservation and	Konserwacja i Restauracja
Restoration of Artworks	Dzieł Sztuki w Specjalizacji
in specialization of	Konserwacja i Restauracja
Conservation and Restoration	Ceramiki i Szkła
of Ceramics and Glass	

**Authorities**

Dean: ass. prof. Marzena Krzemińska-Baluch, PhD  
Vice dean: ass. prof. Renata Bonter-Jędrzejewska, PhD

## Legal basis of the Academy

The Academy of Art and Design in Wrocław is a multi-faculty higher education public institution with registered seat in Wrocław: Plac Polski 3/4.

The Academy is acting on the basis of the decision taken by the Minister of Culture and Art on the 30th of March 1946. The current name of the Academy is in use since the 29th of August 1996 (Official Journal from 1996, no 100, item 462).

The Academy is subordinated to the Minister of Culture and National Heritage and fulfils the legal regulations of the Higher Education Law (Official Journal from 2018, item 1668). Wrocław Academy is accredited by the Polish Accreditation Committee (PKA) – the only statutory body in Poland responsible for assessment of quality of education provided by higher education institutions.

## General presentation

The Academy was founded in 1946 as a State College of Fine Arts. Destroyed during the Second World War, it was rebuilt with a substantial help from a painter, Prof. Eugeniusz Geppert, whose name has been added to the name of the Academy in the course of the years. The following decades brought changes in the structure as well as the dynamic development of our institution, which in 1996 was granted the status of the Academy. Today the Academy of Art and Design in Wrocław plays a major role in the cultural life of Wrocław and Poland, and its extensive international relations extend its impact beyond the Polish borders.

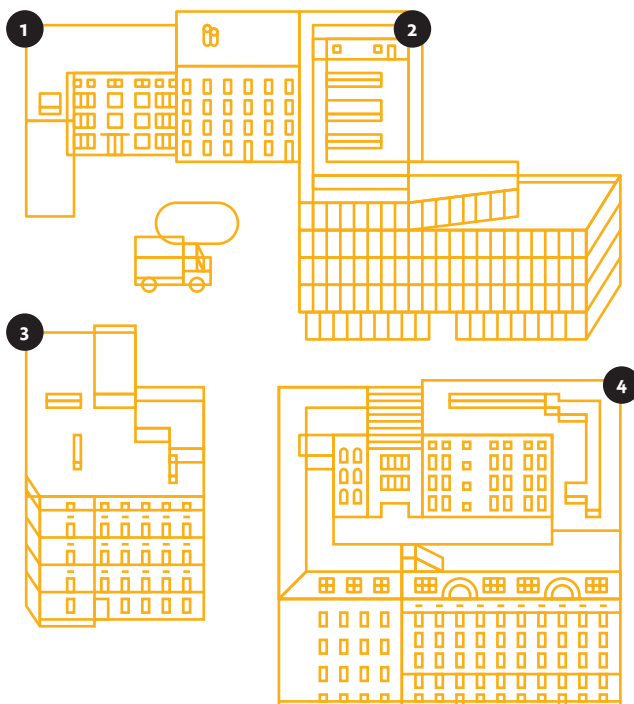
The Eugeniusz Geppert Academy of Art and Design in Wrocław is providing top-of-the-range art and design education to young people from Poland and abroad. The education is run on three levels: Bachelor, Master and PhD level.

<b>BACHELOR (3 YEARS)</b>	<ul style="list-style-type: none"> <li>• Art and Design of Glass</li> <li>• Art and Design of Ceramics</li> <li>• Interior Architecture</li> <li>• Design</li> <li>• Art Mediation</li> <li>• Media Art</li> <li>• Painting</li> </ul>
<b>MASTER (2 YEARS)</b>	<ul style="list-style-type: none"> <li>• Art and Design of Glass</li> <li>• Art and Design of Ceramics</li> <li>• Interior Architecture</li> <li>• Design</li> <li>• Art Mediation</li> <li>• Media Art</li> <li>• MFA in VISUAL ARTS (interdisciplinary study programme conducted in English)</li> </ul>
<b>COMBINED BACHELOR/ MASTER (5 OR 6 YEARS)</b>	<ul style="list-style-type: none"> <li>• Reconstruction and Restoration of Ceramics and Glass (6 years)</li> <li>• Stage Design (5 years)</li> <li>• Painting (5 years)</li> <li>• Sculpture (5 years)</li> <li>• Graphics (5 years)</li> </ul>
<b>DOCTORAL SCHOOL/ PHD (3 YEARS)</b>	<ul style="list-style-type: none"> <li>• PhD in the field of art in the discipline of fine arts and art conservation.</li> </ul>
<b>POST-DIPLOMA COURSES</b>	<ul style="list-style-type: none"> <li>• Painting</li> <li>• Painting in New Media</li> <li>• Interdisciplinary Printmaking</li> <li>• Artistic Disciplines in Architecture</li> <li>• Mediation of Contemporary Art</li> </ul>

## The Academy's buildings

ID network:  
ASP\_WROC\_STUD  
WIFI password:  
egeppert

1. Art Documentation Center  
ul. R. Traugutta 19/21
2. The Centre for Applied  
Arts and Innovation  
ul. R. Traugutta 19/21
3. Dormitory  
ul. H. Pobożnego 9
4. Main administration building  
Plac Polski 3/4



## Facilities

Plac Polski 3/4

Room no: 108 M

opening hours:

Mon: 12.00–15.00

Tue-Thu: 10.00–17.00

Fri: 10.00–15.00

bibi@asp.wroc.pl

## Library

Library of The Eugeniusz Geppert Academy of Art and Design holds over 15,000 volumes, over 3,700 exhibition catalogues, and more than 260 magazines titles (including periodicals and books in Polish, English, German and French) in the fine arts and related fields. The library also holds Master's theses (in selection). A library account is free of charge and a student card is at the same time a library card. In the library, there are computers with Internet access (the operating system is Windows), Wi-Fi, free scanners, paid photocopying, and printing services. The library offers free access to databases; ask a librarian for an access code. More information is at the library website.

## Art supplies shop

Plac Polski 3/4

(ground floor)

opening hours:

Mon-Fri: 9.00–17.00

Sat: 9.00–14.00

Some of the materials necessary to work in the studios are provided by the Academy for free. If you need any extra study material, you will find it in the shop located in the main building. It offers a wide range of art and office materials.

## Canteen

Plac Polski 3/4

(ground floor)

opening hours:

Mon-Fri: 9.00–16.00

Close to the art materials shop there is the canteen and the cafeteria of the Academy. You can just sit down and drink your morning coffee or try Polish cuisine from the varied menu. An average price for a meal: 10–15 PLN.

### **Luboradów, plein-air centre**

Lubradów 2  
Municipality Krośnice

The art centre which belongs to the Academy is situated 60 km from Wrocław in picturesque surroundings. The place hosts the students and professors for open-air workshops (painting, sculpture, ceramics), seminars and conferences. The building is fully equipped and furnished with 8 rooms, a kitchen and bathrooms. The centre includes a big Tongkama wood-fired kiln that was built in 2006. The kiln imitates the model that was used in Korea in early Middle Ages for firing ceramics in very high temperatures (1300–1350°C) and is the only one of this kind in Poland.

### **Dormitory and accommodation**

ul. H. Pobożnego 9  
50-241 Wrocław  
akademik@asp.wroc.pl

The dormitory is situated in the old part of the city, 15 minutes walk from the Academy. Each room contains: 1 bed (bedclothes, pillows and quilt are provided), 1 wardrobe, 1 desk with 1 chair and free access to the Internet. Depending on the standard, in some rooms there is also a fridge. On each floor there is a common kitchen with a fridge and dishes, shared bathrooms with showers and toilets and a studio for artistic use. In the building there is also a laundry room with washing machines and a common room with TV. In the academic year 2020/2021 the monthly rent was from 430 up to 600 PLN per person depending on the standard. Accommodation is offered in double and triple rooms with or without a private bathroom. The check-in is possible a few days before the beginning of each semester (end of

September and mid-February), time of arrival needs to be confirmed directly with the dorm.

The dormitory has only 81 places for both Polish and foreign students and there are always more applications than places. In order to get a place in the dorm you need to contact the dormitory directly and send a special application form.

Please take into consideration the fact that we do not mediate in finding any private accommodation for students who didn't get a place in the dormitory.

If you were not lucky in getting a place in the dorm, you can look for some private accommodation. The offer is quite varied but it takes time to find an appropriate one. The average price for a place in a double room in a private flat is from 600 up to 900 PLN. Some useful websites where the students can search for a flat/room:

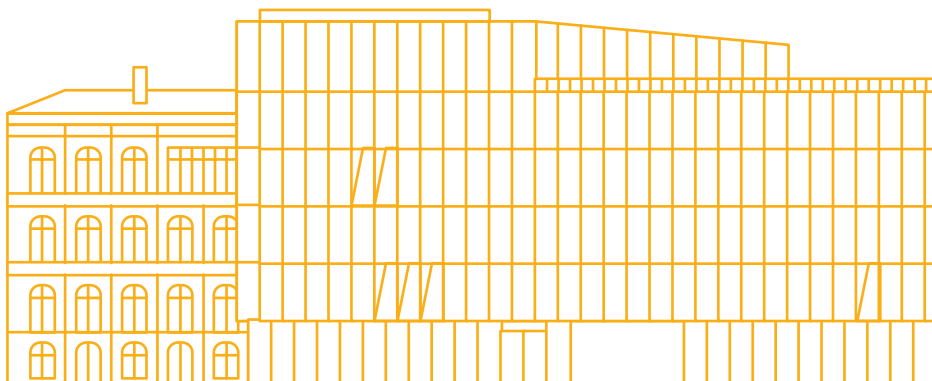
**in Polish:** [wroclaw.instancje.pl](http://wroclaw.instancje.pl)

**in English:** [www.erasmusu.com](http://www.erasmusu.com)

[www.pepehousing.com](http://www.pepehousing.com)

[www.studentdepot.pl](http://www.studentdepot.pl)

[www.las.com.pl](http://www.las.com.pl)



## The International Relations and Promotion Department

The International Relations and Promotion Department organizes and coordinates activities related to the Academy's cooperation with more than a hundred foreign art universities as well as scientific and cultural institutions.

These activities include:

- student and staff exchange
- coordination of internships
- annual International Staff Training Week
- coordination of Visiting Professors/Artists Programme
- initiation and support for international projects and programmes
- implementation and coordination of government programmes (including NAWA)
- coordination of the university's membership in international associations (ELIA, EAIE)
- assistance in organizing exhibitions and other artistic events with the participation of guests from abroad.

The department also recruits foreign students for the interdisciplinary Master's programme and to the Doctoral School, both with English as the language of instruction. In all its activities the department tries to contribute to the process of internationalization of education at the Academy. Our motivation is to adapt to the highest world standards and make your stay in Poland an unforgettable adventure.



Mobility  
Agreements

**ERASMUS+:** 92 agreements in 36 countries.

**Over EU:** 19 agreements in 10 countries.

**STUDENT MOBILITY IN TOTAL SINCE 2002:**

642 incoming students / 865 outgoing students.

**STAFF MOBILITY IN TOTAL SINCE 2006:**

260 incoming staff members / 333 outgoing staff members.

Erasmus+  
studies

International Relations and Promotion Department coordinates the exchange of students under the Erasmus+ Programme and Bilateral Agreements on the levels of instruction: BFA, MFA and PhD excluding diploma years. Deadline of submitting applications: 31 May (winter semester) and 15 November (summer semester).

All necessary information and forms can be downloaded from our website: [asp.wroc.pl/application-procedure](http://asp.wroc.pl/application-procedure)

Erasmus+  
internships

We also accept students for internships within the Erasmus+ Programme:

- to the Art Documentation Center
- to one of the studios as lab assistants (professor's acceptance is required).

Study programmes  
conducted in English

If you are interested in studying in English as a regular student at our Academy please contact: [studyinenglish@asp.wroc.pl](mailto:studyinenglish@asp.wroc.pl) or visit our website: [asp.wroc.pl/study-in-english](http://asp.wroc.pl/study-in-english)

Erasmus+  
Incoming teaching  
and training staff

If you are a teacher interested in coming to our Academy under the Erasmus+ Programme and giving lectures or running workshops with our students, you are welcome

between 15 October and 15 May – the active teaching period at our Academy. Please send your Mobility Agreement to: [international@asp.wroc.pl](mailto:international@asp.wroc.pl) or directly to the Departmental Coordinator.

If you are interested in Training Staff Mobility at our Academy, we invite you to come during the International Week organized every year in June, consisting of series of meetings, lectures and tours of the Academy. Please send your application to: [international@asp.wroc.pl](mailto:international@asp.wroc.pl)

#### Visiting Professor/ Artist Programme

Under the framework of Visiting Professor/Artist Programme we are looking for professionals from different parts of the world, with different points of view, academic background and artistic experience to contribute to the Academy's interdisciplinary approach to education.

We offer short-term 5-days visits or an opportunity to join us for the entire semester. Please send your application to: [studyinenglish@asp.wroc.pl](mailto:studyinenglish@asp.wroc.pl)

## During your study time...

#### Student card

All exchange students as well as students of programmes conducted in English (except trainees) are given on arrival a student card that confirms a student status in Poland. With the card the student benefits from a 50% discount in public transport and cultural institutions all over the country. The cost of the card is 22 PLN.

#### Buddy system

Exchange students have the opportunity to get a Polish Buddy. A Buddy is a Polish student from the Academy who helps with any kind of situations the foreign student can come across during his/her exchange period in Wrocław. The Buddy also helps the international student to integrate in the Academy's student life.

### Welcome Week

Each year the International Relations and Promotion Department organizes Welcome Week for MFA, PhD and exchange students during which students discover various corners of the Academy and Wrocław as well as get to know each other. Moreover, they have an opportunity to taste traditional Polish dishes during the Food Day or to take part in the Speed Meeting and Intercultural Workshops.

### Integration trips

At the beginning of each semester the department organizes a series of integration trips and events for all foreign students. It can be a longer trip to the biggest cities in Poland or a shorter 1-day-trip to the most interesting places around Lower Silesia. The cost of the trips is mostly covered by the funds of the Erasmus+ Programme.

### Erasmus exchange exhibition

Twice a year, at the end of each semester we organize an exhibition for the exchange students in one of our Museum's display rooms. There, the students can show the works that they created during their stay at the Academy. This is a great experience for the students and for the curator (who is always one of the exchange students).

### Polish language course

Erasmus students have the opportunity to attend the Polish language course organized at our Academy for free. The lessons start in October and in February, take place once a week (2 hours) and are credited with 2 ECTS points. The course is finished with a final exam. We provide the same opportunity for regular students of programmes conducted in English.

### Foreign languages courses

The Institute Foreign Languages organises courses in four languages: English, French, German and Spanish. The focus is put on teaching the specialist language of art and design, connected with the direction of studies. In our institution

two coursebooks have been developed. “English for Printmaking”, by Dorota Kopacz and Christopher Nowicki, teaches specialist language from the area of printmaking. Enriched by reproductions of prints by artists mostly connected with the Academy, it is both a professional coursebook of English and a beautiful art album.

“Design English”, by Beata Ludwiczak, is a coursebook which introduces the students to the language issues connected with interior architecture and industrial design.

## Erasmus+ Departmental Coordinators

### Painting

Łukasz Huculak  
lhu@asp.wroc.pl

### Sculpture

Matej Frank  
m.frank@asp.wroc.pl

### Art Mediation

Tomasz Niedziółka  
t.niedziolka@asp.wroc.pl

### Printmaking

Wojciech Kołacz  
w.kolacz@asp.wroc.pl

### Graphic Design

Marek Rybicki  
m.rybicki@asp.wroc.pl

### Media Art

Maja Wolińska  
m.wolinska@asp.wroc.pl

### Interior Architecture

Patrycja Mastej  
p.mastej@asp.wroc.pl

### Design

Renata Wites-Krzyżanowska  
r.wites@asp.wroc.pl

### Stage Design

Damian Banasz  
db@asp.wroc.pl

### Ceramics

Małgorzata Maternik  
m.maternik@asp.wroc.pl

### Glass

Agnieszka Lesiak-Banasiak  
a.lesiakbanasiak@asp.wroc.pl

**Conservation and Restoration  
of Artworks in specialization  
of Conservation  
and Restoration**

**of Ceramics and Glass**

Łukasz Karkoszka

[l.karkoszka@asp.wroc.pl](mailto:l.karkoszka@asp.wroc.pl)

**Foreign Languages**

Stanisław Chwiszczuk

[s.chwiszczuk@asp.wroc.pl](mailto:s.chwiszczuk@asp.wroc.pl)

**Buddy Programme**

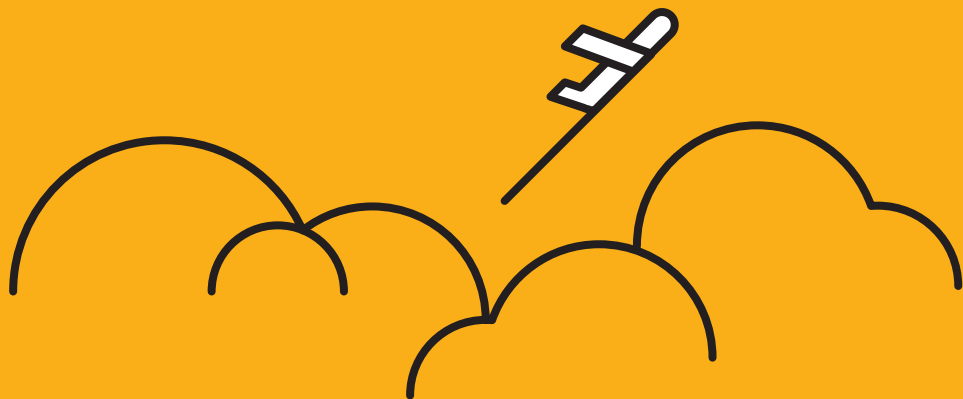
Agata Sikora-Jańska

[asikorajanska@asp.wroc.pl](mailto:asikorajanska@asp.wroc.pl)

## Grading system

POLISH GRADE		ECTS GRADE *	
5,5	Celujący	A	Excellent
5,0	Bardzo dobry	B	Very good
4,5	Dobry plus	C	Good
4	Dobry	D	Satisfactory
3,5	Dostateczny plus	E	Sufficient
3,0	Dostateczny	E	Sufficient
2,0	Niedostateczny	FX	Fail (some more work required before the credit can be awarded)
		F	Fail (considerable further work is required)

\*ECTS – European Credit Transfer System



# 02

## FOREIGNERS IN POLAND

### Poland

#### Geographical location

Poland is situated in central Europe and its neighbours are: Germany, the Czech Republic, Slovakia, Ukraine, Belarus, Lithuania and Russia. The borders are mostly natural. The whole southern part is covered with almost 20 different mountain ranges, the North is lined by the Baltic Sea (524km coastline) and the West by two rivers: the Odra and the Nysa. Among main ranges of the mountains there are: the Tatra Mountains with the highest peak Rysy (2499m), the Beskidy (the highest peak: Babia Góra 1725m), the Sudety and the Karkonosze (the highest peak: Śnieżka 1602m), the Bieszczady Mountains (the highest peak: Tarnica 1346m). Besides mountains and the seaside, the Polish territory is covered with many kilometers of lakes – the biggest ones are situated in northern parts – Pomerania, Masuria, Kashubia.

#### Climate

Make sure that you have clothes for a beach and for a short visit to the North Pole! The climate in Poland is moderate, however, the winter can be very cold and the summer very hot. The average temperature during winter time is from -5° to 0°C but it can go down even to -15°C! The coldest month is February. Snow is not a rule, one year winter can be almost without snowfalls, another year there can be plenty of it. In summer time there is a lot of sunshine interlaced with periods of heavy rainfalls and storms. The hottest months are July and August (25–35°C).

## Foreigners in Poland

### EU-citizens

European Union citizens are permitted to stay in Poland for a period not longer than 3 months without the necessity of registering their residence. If they want to stay longer (one higher education semester lasts 5 months) they need to go to the Registration Office in order to register their stay no later than 45 days before the end of the deadline of 3 months counted from the day of entry to the territory of Poland.

The documents that you need to submit are: special application form (available at the Registration Office), copy of your passport or ID card, copy of your health insurance card (only European Health Insurance Card is accepted without the necessity of a certified Polish translation or other insurance issued in Polish language), copy of the registration in a flat in Poland (dormitory or private accommodation), confirmation of studies from our Academy.

### Non-EU citizens

Some of non-EU countries are allowed for visa-free travels, hence their citizens can stay in Poland legally up to 90 days. List of those countries can be found on the website: [udsc.gov.pl](http://udsc.gov.pl)

However, it is always better to apply for national visa type D, which gives you guarantee of legal stay over 3 months, up to a year.

Visa's expiry date does not equal its length of validity. It's expiration date can be for a year but the actual legal stay can be 150 days. You can find that on your visa blank.

### Watch out!

If you are eager to stay in Poland for a longer period of time than it is provided by your visa you need to apply for a temporary residence permit, on the last day of your visa's validity.

When I fall  
in love in Poland...

Depending on individual case and year of your studies you will get residence permit either for up to 15 months for the first time or for up to 3 years for the following applications.

## Registration Office for Foreigners Urząd Wojewódzki

Urząd Wojewódzki	+48 71 340 61 58
(Voivodeship Office of	+48 71 340 66 79
Lower Silesia in Wrocław)	+48 71 340 67 25

Pl. Powstańców	duw.pl
Warszawy 1	
50-951 Wrocław	



## Health Insurance

The Academy will cover health insurance if the person is:

- 1) a Polish citizen, is aged over 26 and is not subject to health insurance as a member of the insured person's family or on a basis of a different title.

- 2) is a foreigner and studies or undertakes education in Poland and is recognized as a person of Polish origin within the meaning of the provisions on repatriation or has a valid Polish Card and cannot be insured on the basis of different title. A student may voluntarily insure himself/herself by concluding a relevant contract with the National Health Fund (Narodowy Fundusz Zdrowia) and then should provide adequate documents to the Academy.

The European Health Insurance Card is recommended for EU citizens when they plan to travel to Poland. The EHIC usually covers the basic medical care such as diagnostic tests, a consultation with a specialist and a stay in a hospital, but first the patient has to visit a GP obligatorily. Depending on the agreement between Poland and your home country either you pay for medical consultation and the money will be returned by your country after submitting your invoice or you don't need to pay at all. Before your arrival to Poland please get more information in European Health Insurance centre in your country. If you decide to visit a private specialist or GP, the price is from 100–200 PLN for a visit. For a visit in a dental clinic in Poland you have to pay anyway, even if you have your European Health Insurance Card.

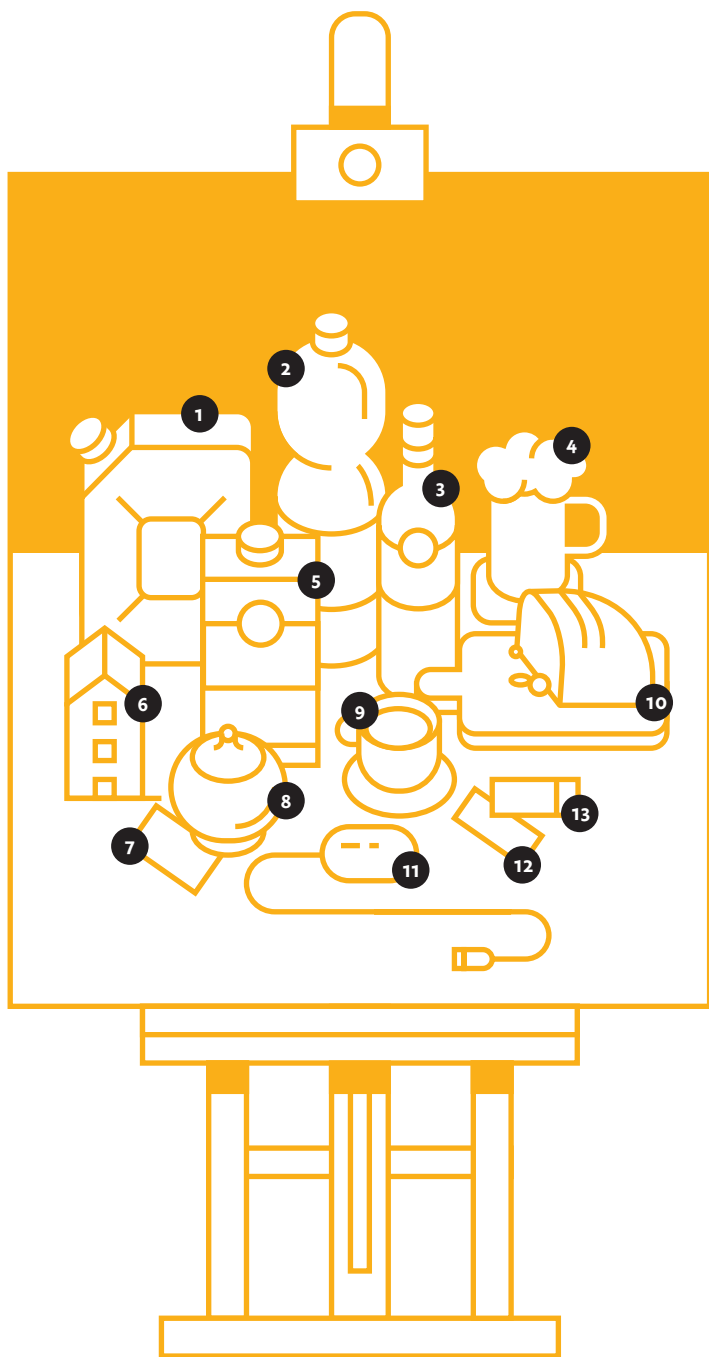
The student who is not a citizen of a European Union Member State or a member state of the European Free Trade Agreement (EFTA) as well as not subject to compulsory health insurance in the Republic of Poland or in another EU Member State or a Member State of the European Free Trade Agreement (EFTA) may independently insure himself/herself by concluding an appropriate contract with the National Health Fund.

## Polish food

Polish cuisine is tasty and hearty but high in calories content. A lot of dishes, like Polish culture, were influenced by other nations like Jewish, Hungarian, German and Ukrainian. You can't leave Poland without tasting pierogi (kind of ravioli with different filling, the famous ones are pierogi ruskie with cottage cheese and potatoes inside), gołąbki (pork meat with rice wrapped in cabbage) or bigos (sauerkraut with sausages, meat and mushrooms), gulasz (small pieces of meat in thick sauce), kluski śląskie (Silesian dumplings made of potatoes) or kotlet schabowy (traditional breaded pork cutlet). Poles eat much pork and potatoes, they have also unique pickled cucumbers and sauerkraut that you will not find anywhere else. The Polish start their day with śniadanie (breakfast), they usually eat sandwiches with cheese or ham, obiad (lunch time) starts between 13.00–16.00 or even later and consists of a big meal: obligatory soup (pomidorowa – tomato soup, barszcz – red beetroot soup and żurek are typically Polish), the main course is usually a piece of meat in thick sauce, potatoes or rice, and salad. Kolacja (supper) is usually the same as breakfast. Polish sweet specialty is sernik (cheese cake), makowiec (poppy seed cake) and pączki (doughnuts).

## SURVIVAL STILL LIFE

1. 1 ltr of petrol 5,8 PLN
2. 1 bottle of mineral water 2 PLN
3. 1 bottle of wine 20–100 PLN
4. 0.5 ltr of beer 3.50 PLN  
(8–12 PLN in pub)
5. 1 ltr of milk 3 PLN
6. Renting room 700–1000 PLN  
(per month)
7. 1 opera ticket 40–60 PLN
8. 1 kg of sugar 4 PLN
9. 1 coffee or tea in café 4–8 PLN
10. 1 loaf of bread 5 PLN
11. Internet cafe, 1h of browsing 3–5  
PLN
12. 1 theatre ticket 40–60 PLN
13. 1 cinema ticket 20–25 PLN



## Bank holidays 2021/2022

1 November	All Saints' Day
11 November	Independence Day
24 December	Christmas Eve
25–26 December	Christmas Days
31 December	New Year's Eve
1 January	New Year
17 April	Easter Sunday
18 April	Easter Monday
1 May	Labor Day
3 May	Constitution Day
16 June	Corpus Christi
15 August	Assumption Day

## Polish language or tongue twister

The Polish language belongs to the West-Slavic group of the Indo-European languages together with Czech and Slovak. Polish, like other Indo-European languages, shares some Latin grammar and vocabulary. There are 3 tenses (past, present, future), 2 numbers (singular and plural), and 3 genders (masculine, feminine, neuter). There are no articles but Polish, like Latin, is an inflectional language that distinguishes 7 cases, defining the noun usage in a sentence. This feature makes our mother tongue difficult to master but practice makes perfect.

## Survival vocabulary

Good morning — dzień dobry

Hi — cześć

How are you? — co słychać?

I am — jestem

Goodbye — do widzenia

Thank you — dziękuję

I am sorry, Excuse me

— przepraszam

Please — proszę

Yes — tak

No — nie

I would like — chciałbym

I don't know — nie wiem

I don't understand

— nie rozumiem

I don't speak Polish

— nie mówię po polsku

Where is...? — gdzie jest...?

Post Office — poczta

University — uniwersytet

Street — ulica

Pharmacy — apteka

Hospital — szpital

Fine Arts Academy

— Akademia Sztuk Pięknych

Dormitory — akademik

Canteen — stołówka

Cinema — kino

Bus/tram stop — przystanek

autobusowy/tramwajowy

Toilet — toaleta

Lecturer — wykładowca

Dean — dziekan

Dean's Office — dziekanat

Library — biblioteka

Bookshop — księgarnia

How much is it?

— ile to kosztuje?

Bread — chleb

Milk — mleko

Coffee — kawa

Tea — herbata

Beer — piwo

Shop — sklep

Ticket — bilet

Stamp — znaczek

Letter — list

I'm lost — zgubiłem się

Help! — pomocy!

Fire — pożar

I need a doctor

— potrzebuję lekarza.

I'm looking for... — szukam...

What's your name?

— Jak masz na imię?

My name is Emma

— Mam na imię Emma

Where are you from?

— Skąd jesteś?

I'm from... — Jestem z...

How old are you?

— Ile masz lat?

I'm ... years old — Mam ... lat

Do you speak English?

— Mówisz po angielsku?



Population: 700 000

Total area: 29 390 km<sup>2</sup>

## General information

### Historical sketch

Wrocław, the capital of Lower Silesia, is one of the most beautiful and oldest cities in Europe. It is Poland's fourth-largest city, located on the Odra river in the south-west part of the country at the feet of the Sudety Mountains.

Wrocław is commonly called the Venice of Central Europe because of its 12 islands and over 100 bridges (even more than in Venice!).

During 1000 years of the history, Wrocław often changed its face and political status. Going the rounds from one country to another (Bohemian, Hungarian, Austrian-Prussian and German), Wrocław eventually returned to Poland after the Second World War. Foreign influences have always been present in the history of the city. On your arrival you will certainly feel the energetic multicultural atmosphere. Wrocław is the meeting place, the place of international conferences, festivals, fairs and exhibitions attracting people from all over the world. Placed in the central part of Europe, Wrocław is a perfect logistics center, it has a well developed infrastructure (main train stations, international airport, inland waterway, modern roads system and highway). Good location has contributed to the industrial and economical development of the city and has increased the number of foreign investment from all over the world, mainly from Europe.

Wrocław is also one of the most important research and development centers. 21 higher institutions give instruction

to about 100 000 of students. No matter the season of the year, day or night, Wroclaw is always teeming with life. The well developed tourist infrastructure and rich program of cultural events multiply the number of visitors from all over the world.

#### Music festivals

There are famous international music festivals which take place in Wroclaw: International Festival "Vratislavia Cantans", "Jazz upon Odra", "Singing Actors' Festival".

#### European Capital of Culture 2016

In 2012 Wroclaw was one of the European host cities for UEFA EURO 2012 and in 2016 the city became the European Capital of Culture (together with a Spanish city San Sebastian).

#### Architecture

The architecture of Wroclaw is unique too, every period has left its architectural heritage making the city a mosaic of different styles. A strong catholic tradition can be observed in numerous sacred art objects from the Middle Ages until modern times. If you are tired of visiting monuments and other historical attractions, you can take a breath sitting in the beautiful Botanic Garden or go to the greatest and oldest park of Wroclaw, the Szczytnicki Park. When you want to work your body – the sport and fitness infrastructure is also well developed.

#### Wroc-love -the city of dwarves

You can find them everywhere around here! The Wroclaw Dwarves stand about a foot tall, are made of bronze, and look exactly like the ones from fairytales. The dwarves took over all the city and became the symbol of Wroclaw. They are still growing in numbers and it is hard to keep track of how many there are..

Their place of predilection is the Market Square and its surroundings, they climb public lamps, go fishing on river

banks and watch pedestrians carefully from the most unexpected places. In short, they keep an eye on the city and its inhabitants. They are not alone, Papa Dwarf rules in ul. Świdnicka, near the Market Square.

## Lower Silesia

Main cities:

1. Wrocław
2. Jelenia Góra
3. Kłodzko
4. Wałbrzych
5. Legnica

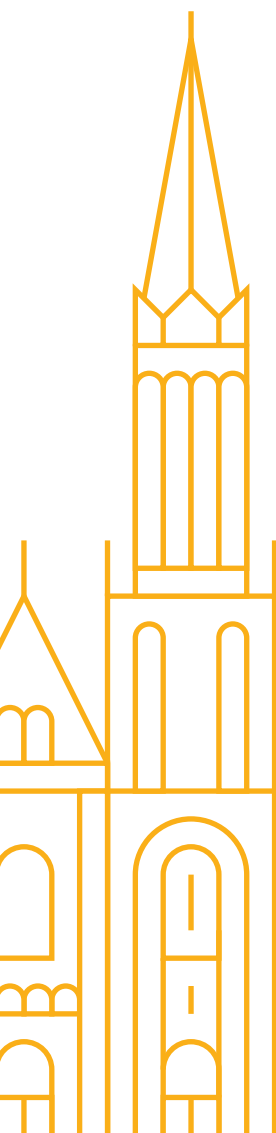


The region of Lower Silesia is one of the most prosperous regions in Poland. It is located in the south-west part of the country and is a neighbor with Germany from the west and with the Czech Republic from the south. This location is very advantageous for economical and cultural reasons. The region is mostly mountainous, the southern part is lined by 300 km of a range of mountains called Sudety. The rest of the region remains lowland. The various landscapes and quite important heritage of Polish art and history are the factors of a developed tourist activity.

There are three monuments and places of the region that have been inscribed on the list of UNESCO World Heritage Sites: The Centennial Hall in Wrocław, the Churches of Peace in Świdnica and Jawor and the Muskau Park by the Nysa River (shared with Germany).

The region of Lower Silesia is famous for its castles. There are about 400 castles, palaces or ruins and fortresses in the region that were built since the medieval times. The most frequently visited and remarkable are: Czocha (in Leśna), Książ (in Wałbrzych), Chojnik (in Jelenia Góra), Bolków, Grodziec and also monasteries such as the Cisterian Abbey in Lubiąż.

## PLACES TO SEE IN WROCLAW



1. Cathedral Island (Ostrów Tumski)
2. Old Water Tower
3. St. Elizabeth church
4. The Church of Saint Michael the Archangel
5. Contemporary Museum
6. The Church of St. Mary on the sand
7. The Centennial Hall
8. Natural History Museum
9. The Market Square
10. Panorama of the Battle of Racławice
11. Malt Island
12. The National Museum
13. Four Domes Pavilion
14. Salt Square
15. Hydropolis
16. The City Hall
17. Building of the Architecture Faculty
18. The University
19. The Ossolineum
20. The Zoo
21. The Synagogue Under a White Stork
22. The Szczytnicki Park
23. Sky Tower



1



2



3



4



5



6



7



8



9



10



11



12



13



14



15



16



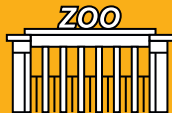
17



18



19



20



21



22



23

# IMPORTANT PHONE NUMBERS

Gas emergency

**992**

Police

**997**

Ambulance

**999**

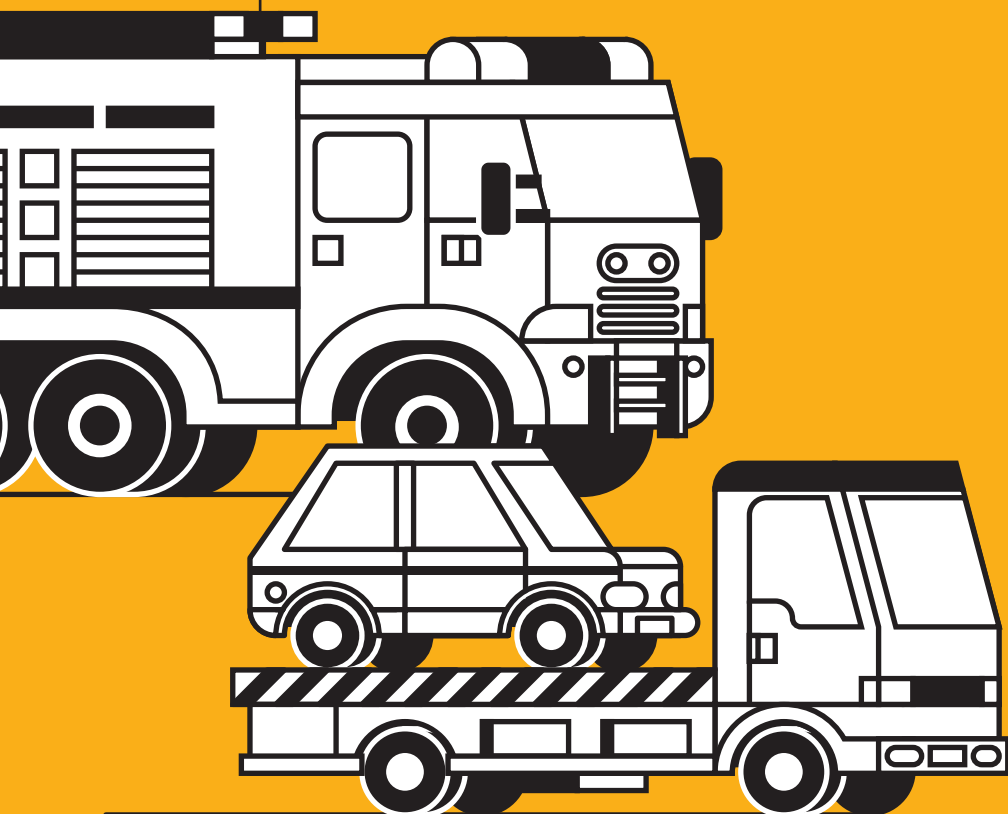


Fire brigade

**998**

Pan-european emergency number

**112**



## Public transport in Wrocław

The system of urban communication is quite easy and comfortable. You can travel by bus or by tram depending on your destination.

The frequency of the lines is from 7 to 15 minutes depending on the line and the time of the day. Information about the timetable and itinerary is posted at every line stop. BUT probably it will be easier for you to use a friendly app – [jakdojade.pl](http://jakdojade.pl), which will help you to find your location with GPS and find the shortest/most comfortable.

### Urban Card

Customer

Service

Center

ul. Grabiszyńska 9

Mon-Fri: 8.00–18.00

Sat: 8.00–14.00

For temporary tickets over 7 days an Urban Card is required (Wrocławska Karta Miejska). In order to get the Urban Card you have to go to the Customer Service Center. You will be asked to fill in an application form and pay for your first temporary ticket. After 5 working days the ready card can be picked up only personally by the applicant.

Traveling without a ticket is punished with a fine of about 210 PLN – passengers are often asked to show their tickets during the day and at night.

### Where to buy tickets?

Mainly in buses/trams which are all equipped with ticket machines. Please keep in mind that you can pay there only with contactless card. Other kinds of tickets are available only in ticket machines, sold in post offices and in some kiosks.

## Trams and buses

They are marked with numbers and letters. When the number on the tram is printed on a yellow board it means that the itinerary has been temporarily changed. Information about the new itinerary is always posted at the line stop.

## Travel by taxi

ZTP Radio Taxi  
phone: 196 22

Mini Radio Taxi  
phone: 196 26

If you travel by taxi in Wrocław, remember to ask the driver for a discount card, when taking the cab next time you will save your money. There are many taxi companies offering different prices.

It is worth calling a taxi by phone rather than snagging one from the ranks – you will have 5–25% of reduction. Price per 1 km: 3,00–4,50 PLN depending on the time of traveling (between 23.00–6.00 is more expensive).

## By bike

Bicycle lines (214 km in total) are everywhere in the city and it is really easy to get round by bike. Through Wrocław runs an international tourist line EuroVelo which starts in Gdańsk (North of Poland) and ends in Pula (Croatia). If you have no bicycle you can rent it or you can buy it in a second hand market for a lower price. Sunday Flea Market by the Auchan, Korona Shopping Centre, ul. Krzywoustego 126 (free shuttle bus from pl. Grunwaldzki).

In June 2011 the city of Wrocław has introduced a rent bike system which enables bicycle users to ride around the city using bike as any public transport. The network is very good and there are lots of renting points all over the city.

To use the bike you need to register on the website and pay 10 PLN. First 20 minutes of riding is free each time you rent. The first hour costs 2 PLN and 4 PLN for every next hour. To rent/return the bike from the point you need to have a mobile phone with Polish simcard.

### **By boat**

Zatoka Gondoli  
(Gondola's Bay)  
ul. Jana Ewangelisty  
Purkyniego  
(next to National  
Museum)

Wroclaw – the city of islands has a very well developed inland waterway transport. There are two logistics inland ports but the river can be used by tourist or private people as well. Close to the National Museum you can rent a canoe or a boat which will carry you on a beautiful journey along the river. The harbor is called Gondola's Bay (Zatoka Gondoli) and is opened from April to October. You can go to the nearest harbor on Wyspa Piaskowa or nearby Hala Targowa enter the boat for tourists and enjoy the cruise with a guide. One of the nicest itineraries is the eastern part of the city – you will admire a beautiful view of the Cathedral, the National Museum, then you will pass under the famous Grunwald Bridge and arrive directly at the Zoo.

### **By plane**

Nicolaus Copernicus  
Wrocław Airport  
[airport.wroclaw.pl](http://airport.wroclaw.pl)

The Wrocław Airport is located about 10 km from the city centre. It is connected with the Main Railway Station by the public transport, bus number 106. The bus runs twice an hour and the journey lasts about 40 minutes to the railway station.

## By train

Train tickets:  
[pkp.pl](http://pkp.pl)

With the student card, you can receive a 51% discount for every kind of train. Train tickets can be bought on the train station, by Internet and directly on the train (attention: buying tickets on the train is charged additionally). In Poland there are two different train companies: InterRegio and PKP Intercity and their tickets cannot be used interchangeably. The main train station in Wroclaw is called “WROCŁAW GŁÓWNY” and is located in the city centre, 5–10 minutes from the Market Square on foot. Online schedule of the trains and prices of the tickets: [www.pkp.pl](http://www.pkp.pl)

# PUBLIC TRANSPORT IN WROCŁAW

## 1. CITY BUSES

Daily buses numbers:

100 –150

Fast buses numbers:

A, C, D, K, N

## 2. TAXI

Radio Taxi ZTP

phone: 19622

Mini Radio Taxi

phone: 196 26



### 3. PLANES

Wrocław Airport  
Ul. Graniczna 190  
54-530 Wrocław

[airport.wroclaw.pl](http://airport.wroclaw.pl)

### 4. TRAINS

Main Railway  
Station  
Ul. Piłsudskiego 105  
50-085 Wrocław

Train tickets:  
[pkp.pl](http://pkp.pl)

### 5. TRAMS

Trams numbers:  
0-33

### 6. BOATS

The Gondola's Bay  
Jana Ewangelisty  
Purkyniego 9  
50-155 Wrocław

[gondole.eu](http://gondole.eu)







AKADEMIA  
SZTUK  
PIEKNYCH  
IM. EUGENIUSZA  
GEPPERTA  
WE WROCŁAWIU



THE  
EUGENIUSZ  
GEPPERT  
ACADEMY OF  
ART AND  
DESIGN  
IN WROCŁAW

