

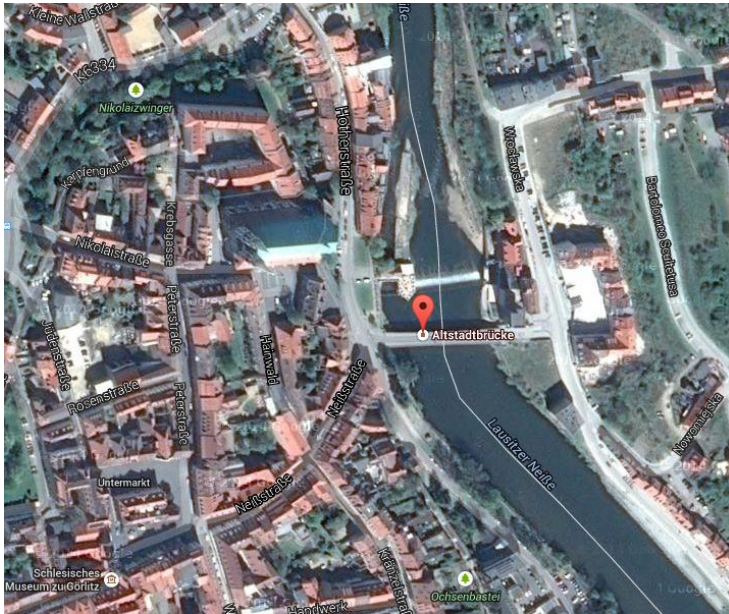
- 1 Plac przed Stadthalle (Hala Miejska), przed głównym wejściem w bezpośrednim sąsiedztwie Mostu JP II

<https://www.google.com/maps/views/explore?gl=de&hl=de&vm=1&ll=51.150472,14.999563&bd=51.147548,14.994467,51.153396,15.004659&z=17>



2 Hotherstraße przy Moście Staromiejskim

<https://www.google.com/maps/place/Altstadtbr%C3%BCcke/@51.1574905,14.9920173,638m/data=!3m1!1e3!4m2!3m1!1s0x4708dc17f5e43cbf:0x1a0f9ad99f65523b>





3 Platz des 17. Juni, miejsce między rotundą Kaisertrutz a pomnikiem Demiani

<https://www.google.com/maps/views/explore?gl=de&hl=de&vm=1&ll=51.154931,14.985222&bd=51.153469,14.982955,51.156393,14.987488&z=18>



4      Marienplatz, miejsce przy Dicker Turm

<https://www.google.com/maps/views/explore?gl=de&hl=de&vm=1&ll=51.153513,14.987626&bd=51.152051,14.985359,51.154975,14.989892&z=18>





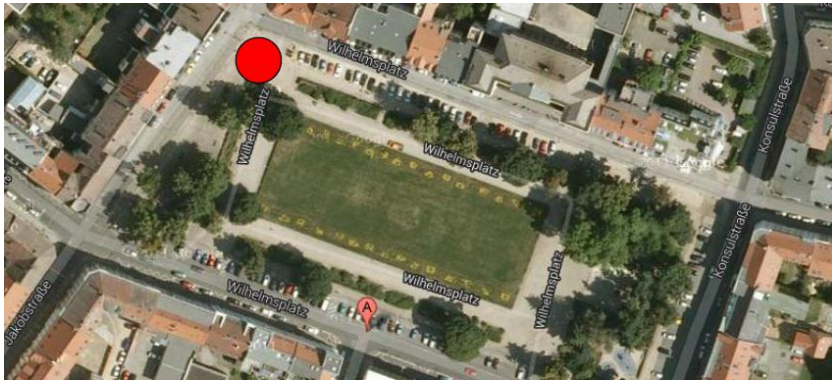
## 5      Konsulplatz

<https://www.google.com/maps/views/explore?gl=de&hl=de&vm=1&ll=51.150009,14.988768&bd=51.147085,14.984235,51.152933,14.993301&z=17>



6      Wilhelmsplatz – miejsce na rogu północnym od ul. Jakobstraße

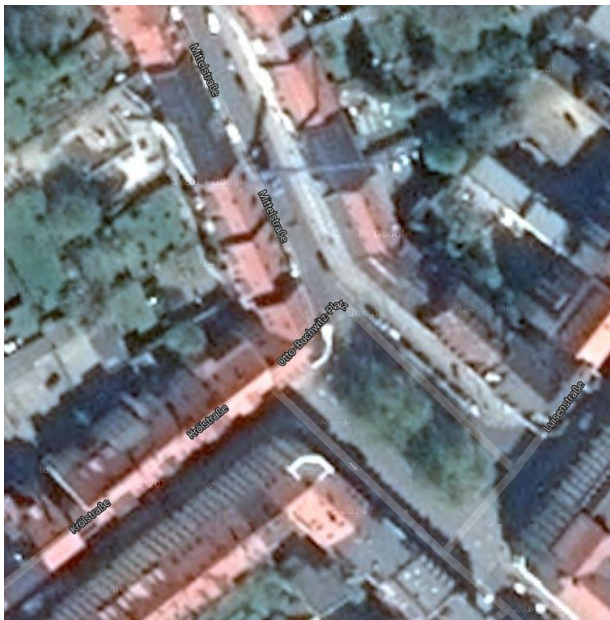
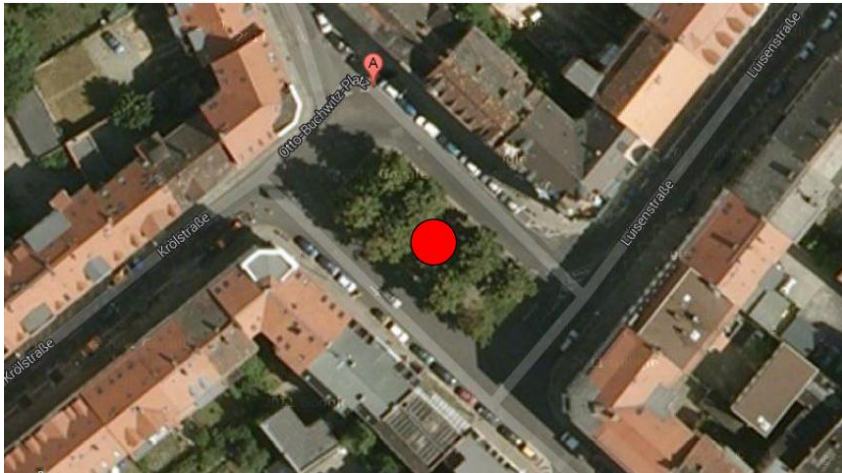
<https://www.google.com/maps/views/explore?gl=de&hl=de&vm=1&ll=51.149096,14.985749&bd=51.146171,14.981216,51.15202,14.990282&z=17>





7 Otto-Buchwitz-Platz

<https://www.google.com/maps/views/explore?gl=de&hl=de&vm=1&ll=51.152908,14.982269&bd=51.152177,14.980995,51.153639,14.983543&z=19>



8 Brunnen-/ Teichstraße

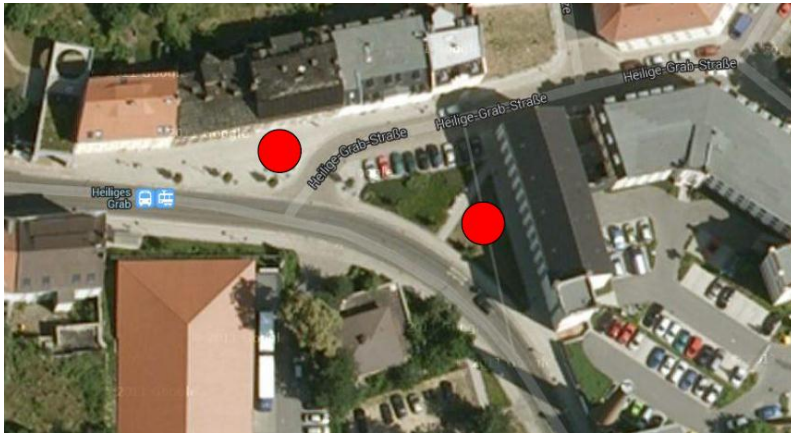
<https://www.google.com/maps/views/explore?gl=de&hl=de&vm=1&ll=51.154783,14.98268&bd=51.153321,14.980132,51.156244,14.985228&z=18>





9 Grüner Graben/Heilig-Grab-Straße

<https://www.google.com/maps/views/explore?gl=de&hl=de&vm=1&ll=51.158778,14.984719&bd=51.155854,14.979623,51.161701,14.989815&z=17>



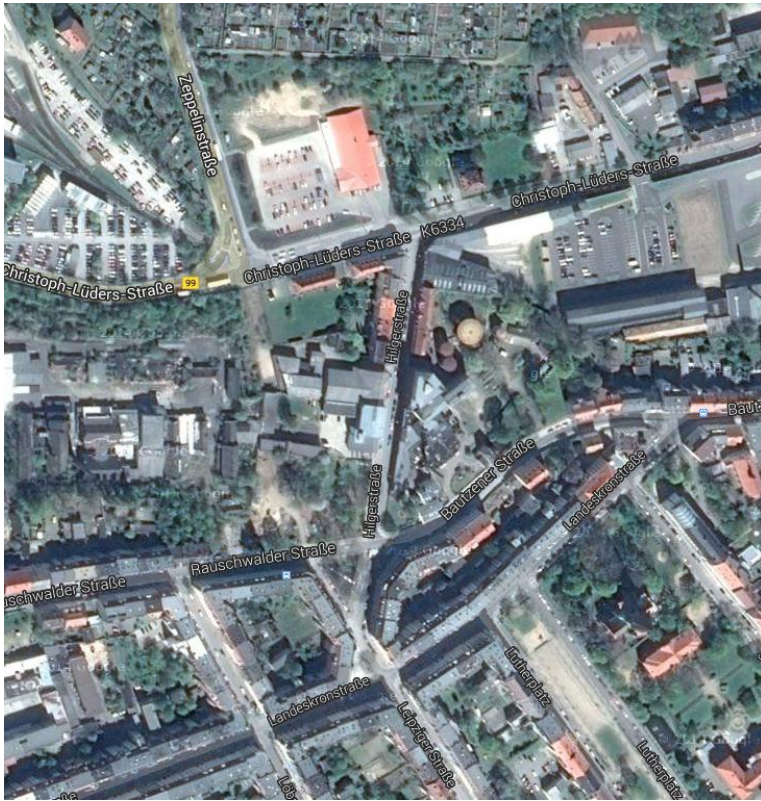
<https://www.google.com/maps/place/Christoph-L%C3%BCders-Stra%C3%9Fe,+G%C3%B6rlitz,+Deutschland/@51.1550081,14.9788577,638m/data=!3m1!1e3!4m2!3m1!1s0x4708ddcd4760b8fb:0x7b19f469bab9960a>





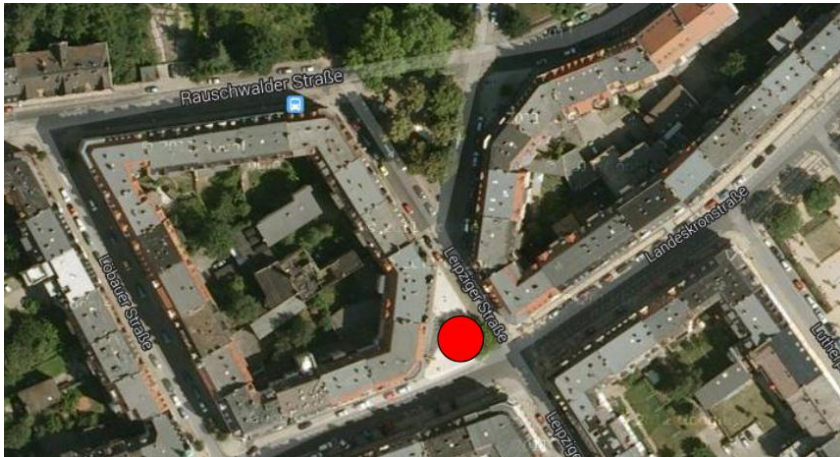
11 Hilgerstraße

<https://www.google.com/maps/views/explore?gl=de&hl=de&vm=1&ll=51.154066,14.975585&bd=51.151142,14.971052,51.15699,14.980118&z=17>



## 12 Leipziger Straße

<https://www.google.com/maps/views/explore?gl=de&hl=de&vm=1&ll=51.151407,14.976499&bd=51.148483,14.971403,51.154331,14.981595&z=17>





<https://www.google.com/maps/views/explore?gl=de&hl=de&vm=1&ll=51.152143,14.974847&bd=51.149219,14.970314,51.155067,14.97938&z=17>



Löbauer Straße

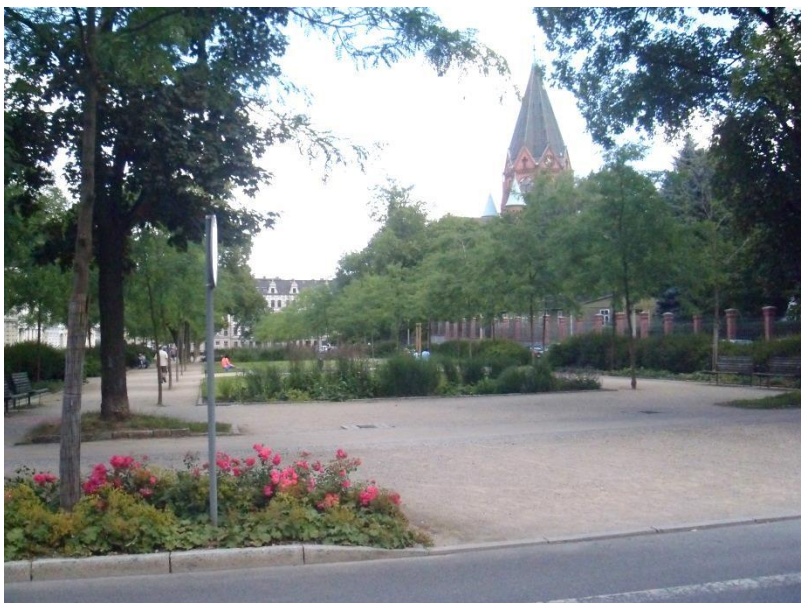
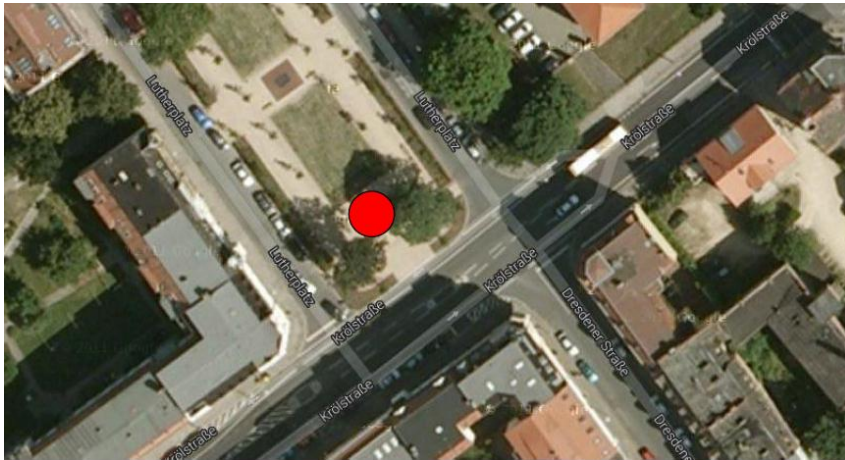
<https://www.google.com/maps/views/explore?gl=de&hl=de&vm=1&ll=51.151839,14.974393&bd=51.148914,14.969297,51.154763,14.979489&z=17>



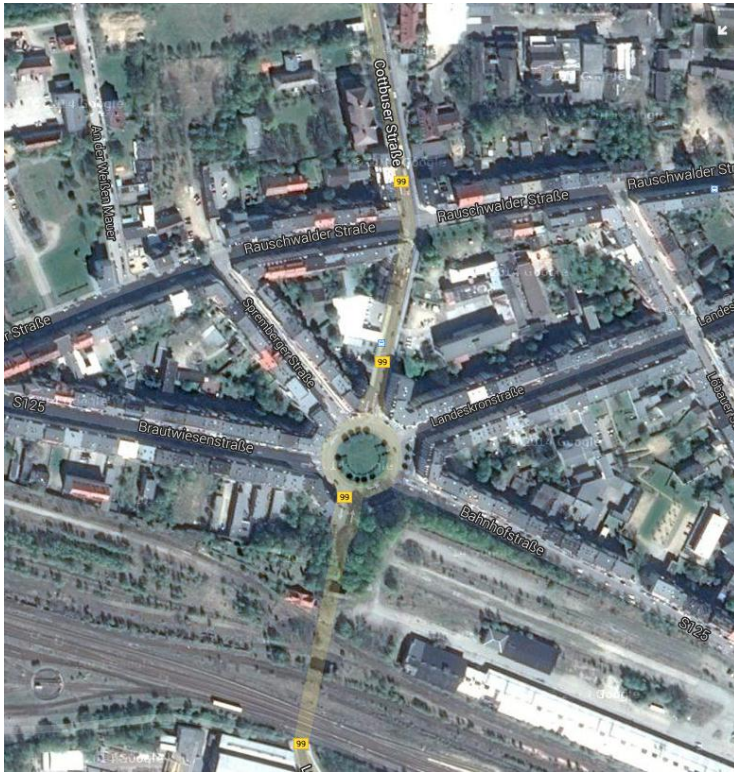


15 Lutherplatz

<https://www.google.com/maps/views/explore?gl=de&hl=de&vm=1&ll=51.152376,14.977672&bd=51.149452,14.973139,51.1553,14.982205&z=17>



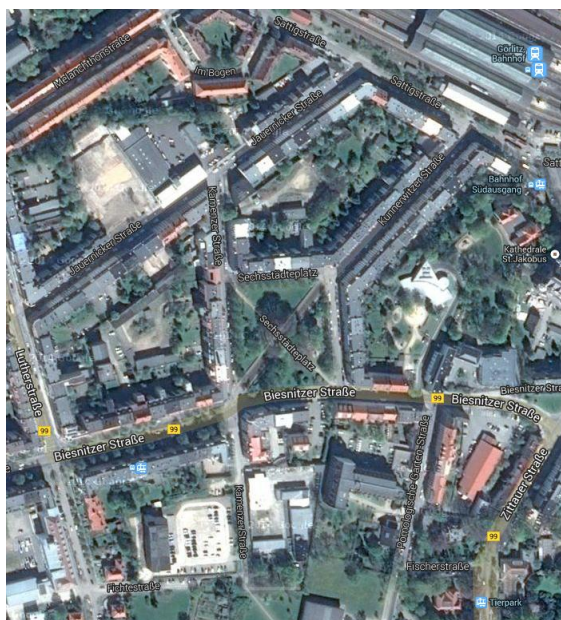
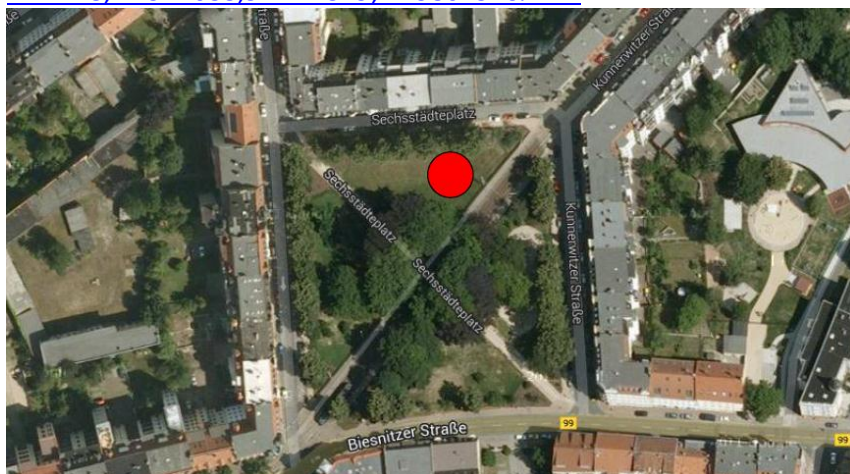
<https://www.google.com/maps/views/explore?gl=de&hl=de&vm=1&ll=51.151413,14.970519&bd=51.148488,14.965986,51.154337,14.975052&z=17>



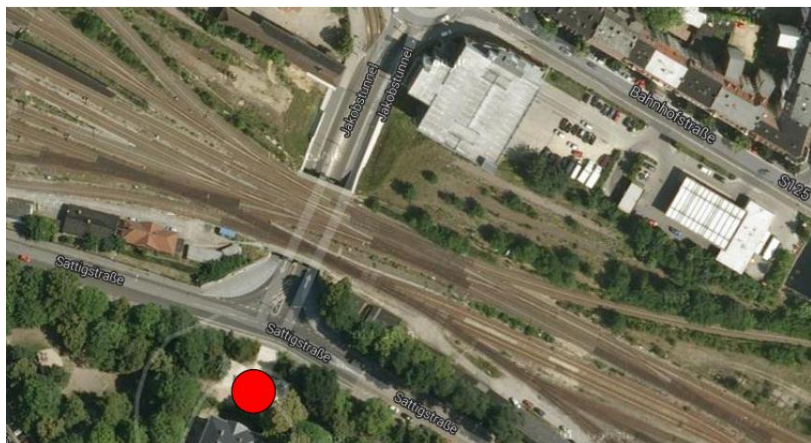


17 Sechsstädteplatz – miejsce od strony północnej, od ul. Kunnerwitzer Str.

<https://www.google.com/maps/views/explore?gl=de&hl=de&vm=1&ll=51.144404,14.975621&bd=51.14148,14.971088,51.147329,14.980154&z=17>









19 Plac przed Dworcem Głównym

<https://www.google.com/maps/views/explore?gl=de&hl=de&vm=1&ll=51.147478,14.979552&bd=51.141629,14.970486,51.153326,14.988618&z=16>

